

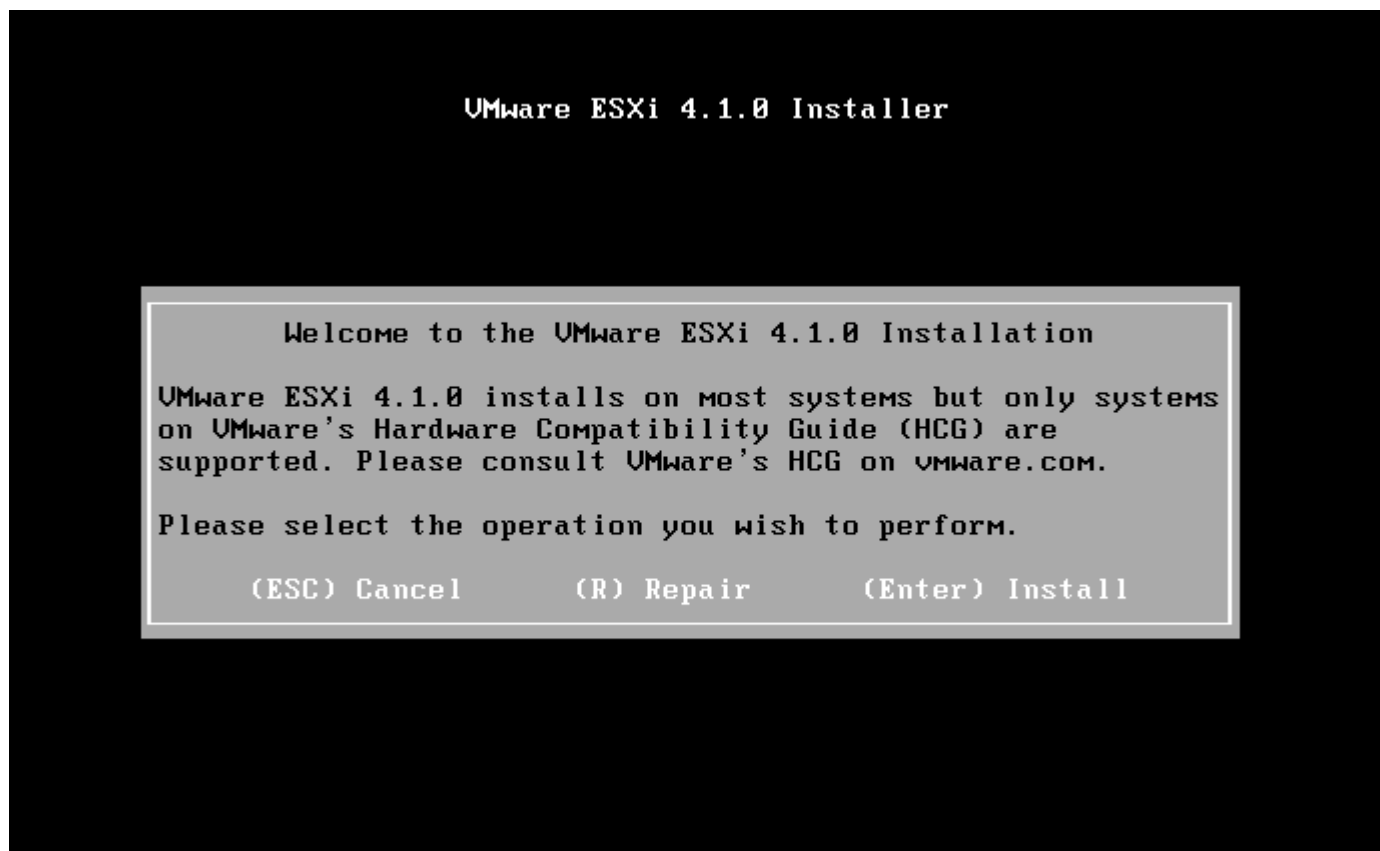


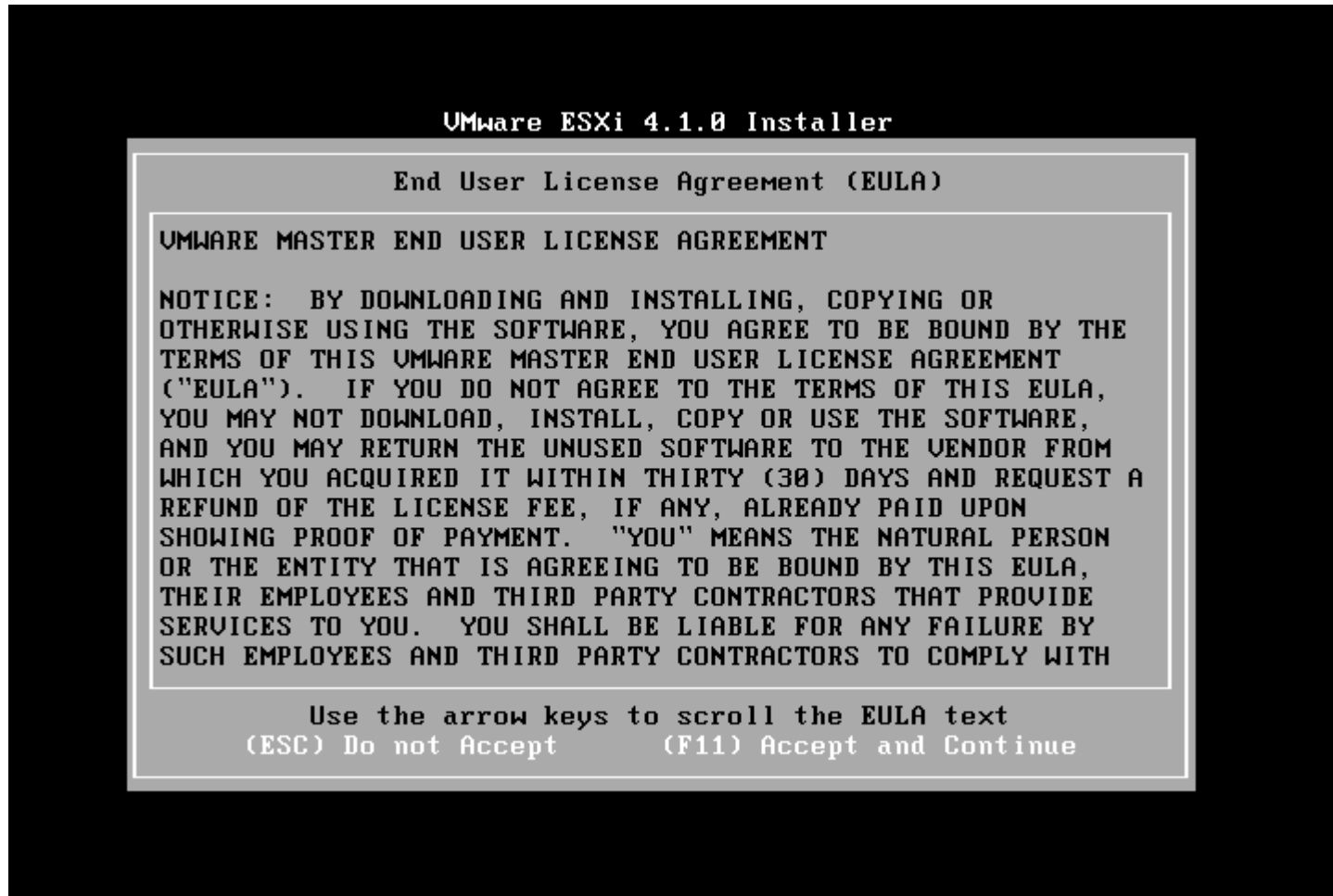
```
VMware ESXi 4.1.0 (VMkernel Release Build 260247)

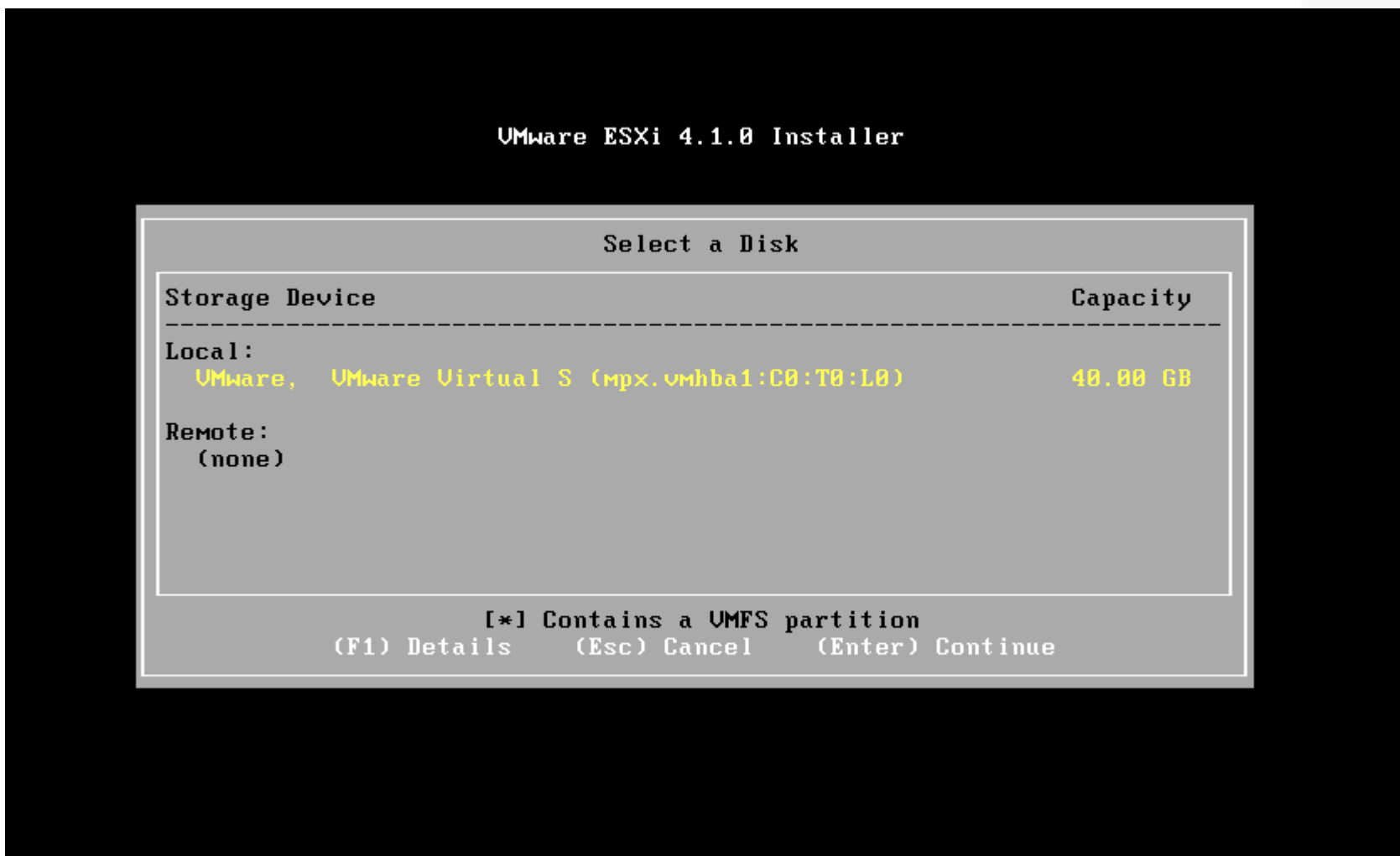
VMware, Inc. VMware Virtual Platform

2 x Intel(R) Core(TM)2 Quad CPU Q6600 @ 2.40GHz
2 GB Memory

vmkapi01_0_0_0_nmp_shim loaded successfully.
```













VMware ESXi 4.1.0 Installer

Installation Complete

ESXi 4.1.0 has been **successfully** installed.

ESXi 4.1.0 will operate in evaluation mode for 60 days. To use ESXi 4.1.0 after the evaluation period, you must register for a VMware product license. To administer your server, use the vSphere Client or the Direct Console User Interface.

You must reboot the server to start using ESXi 4.1.0.

Be sure to **remove** the installation disc before you reboot.

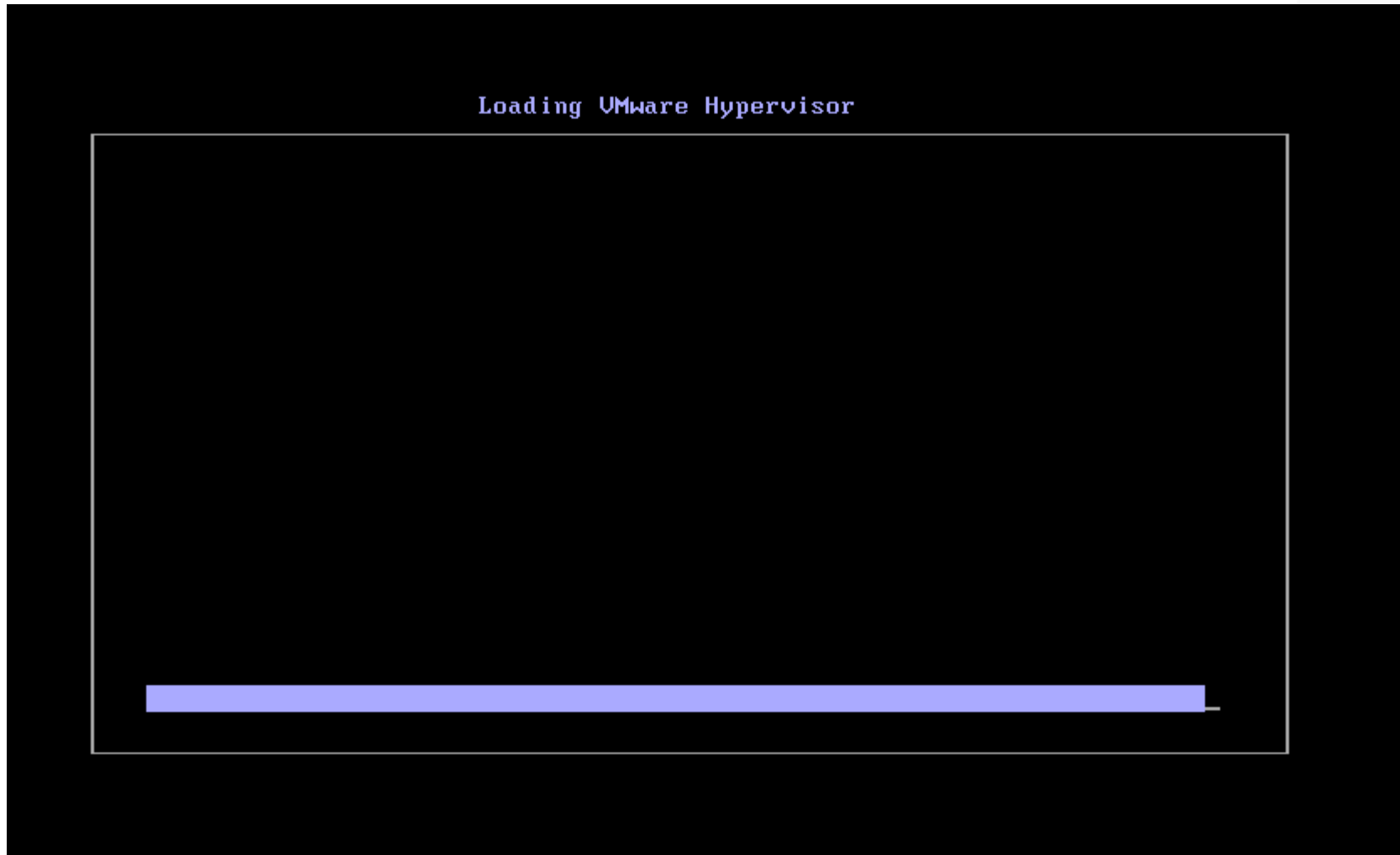
(Enter) Reboot

VMware ESXi 4.1.0 Installer

Rebooting Server

The server will shut down and reboot.

The process will take a short time to complete.



```
VMware ESXi 4.1.0 (VMKernel Release Build 260247)

VMware, Inc. VMware Virtual Platform

2 x Intel(R) Core(TM)2 Quad CPU Q6600 @ 2.40GHz
2 GB Memory

VMKernel loaded successfully.
```

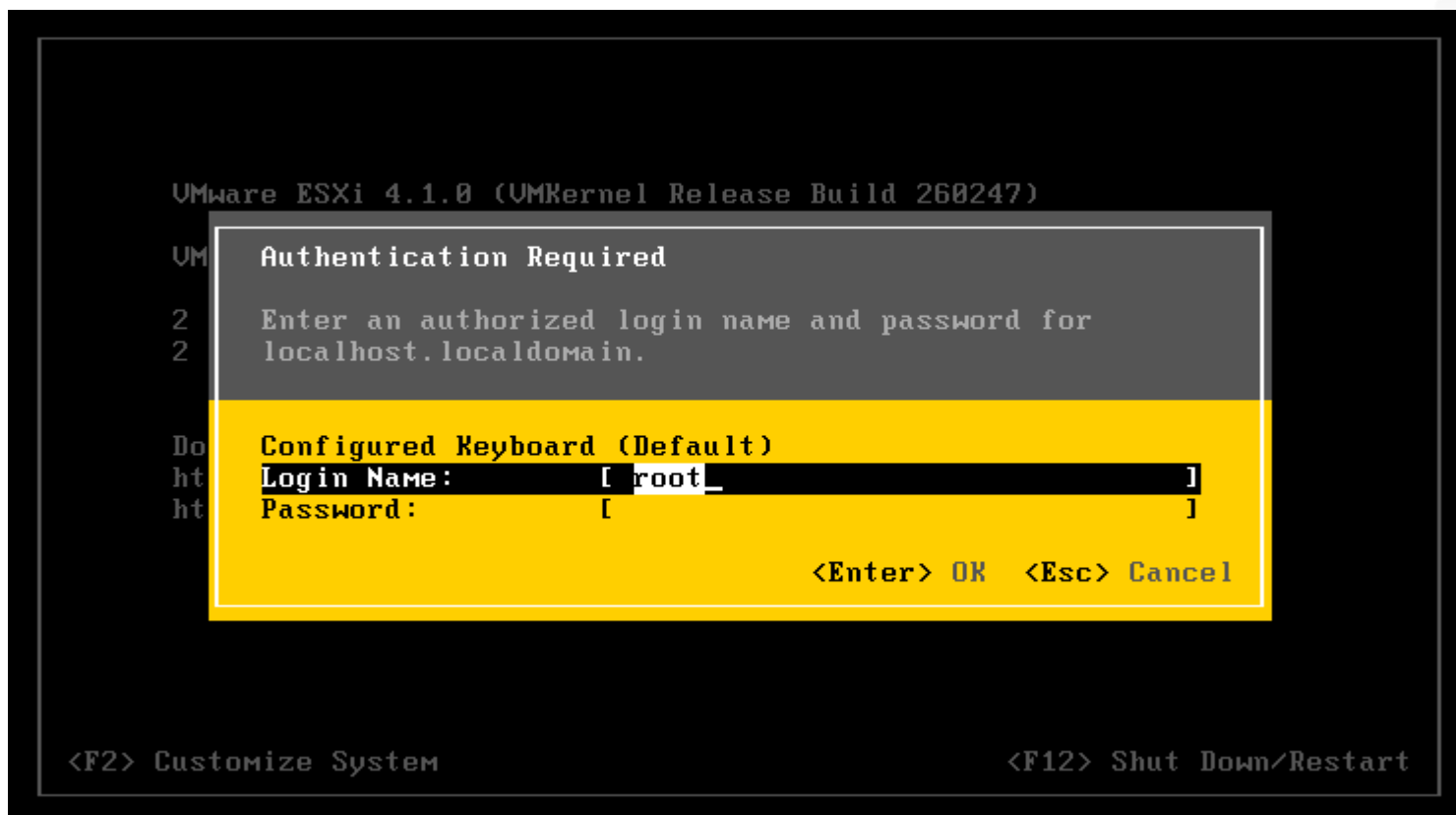
```
VMware ESXi 4.1.0 (VMKernel Release Build 260247)

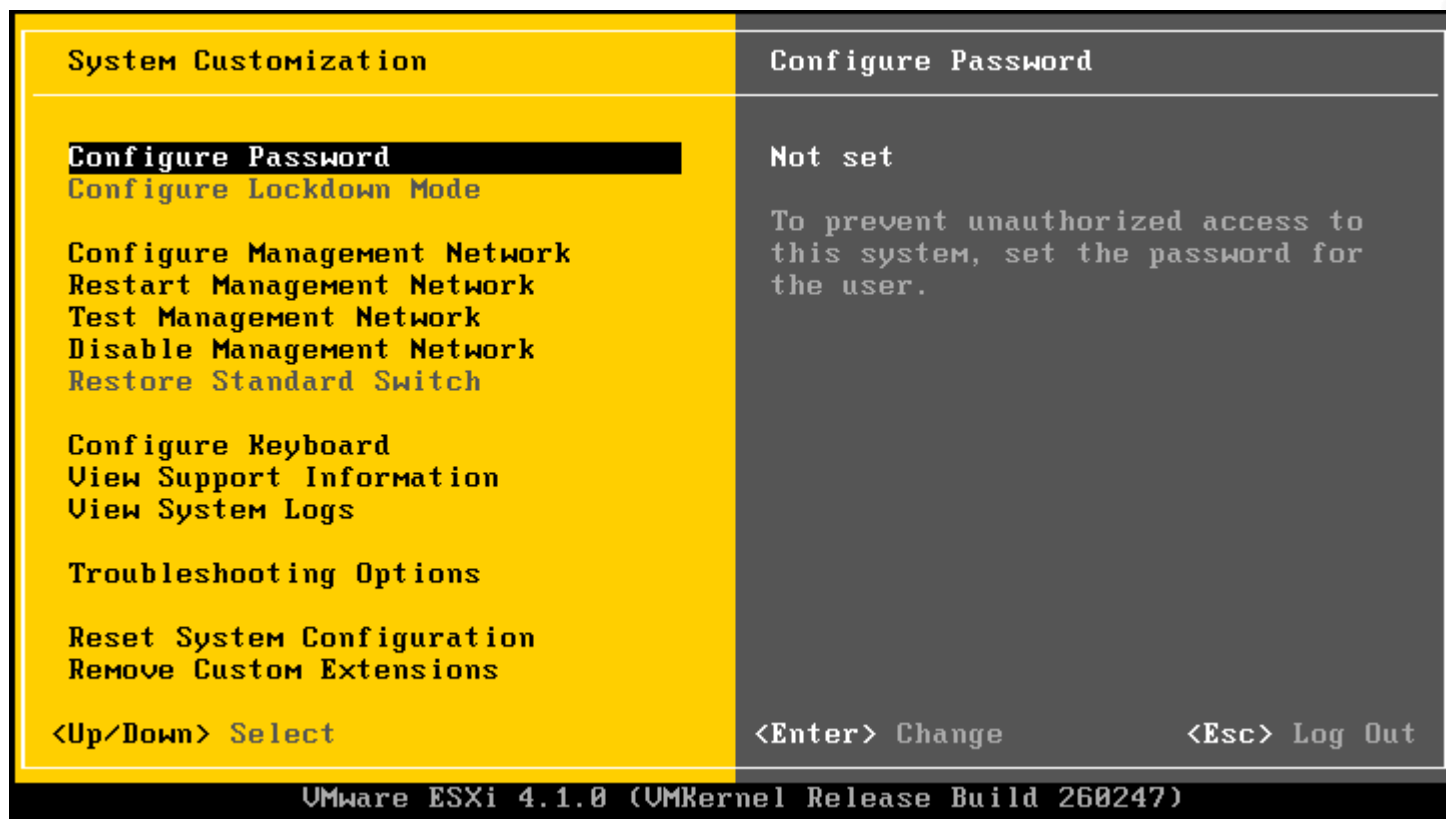
VMware, Inc. VMware Virtual Platform

2 x Intel(R) Core(TM)2 Quad CPU Q6600 @ 2.40GHz
2 GB Memory

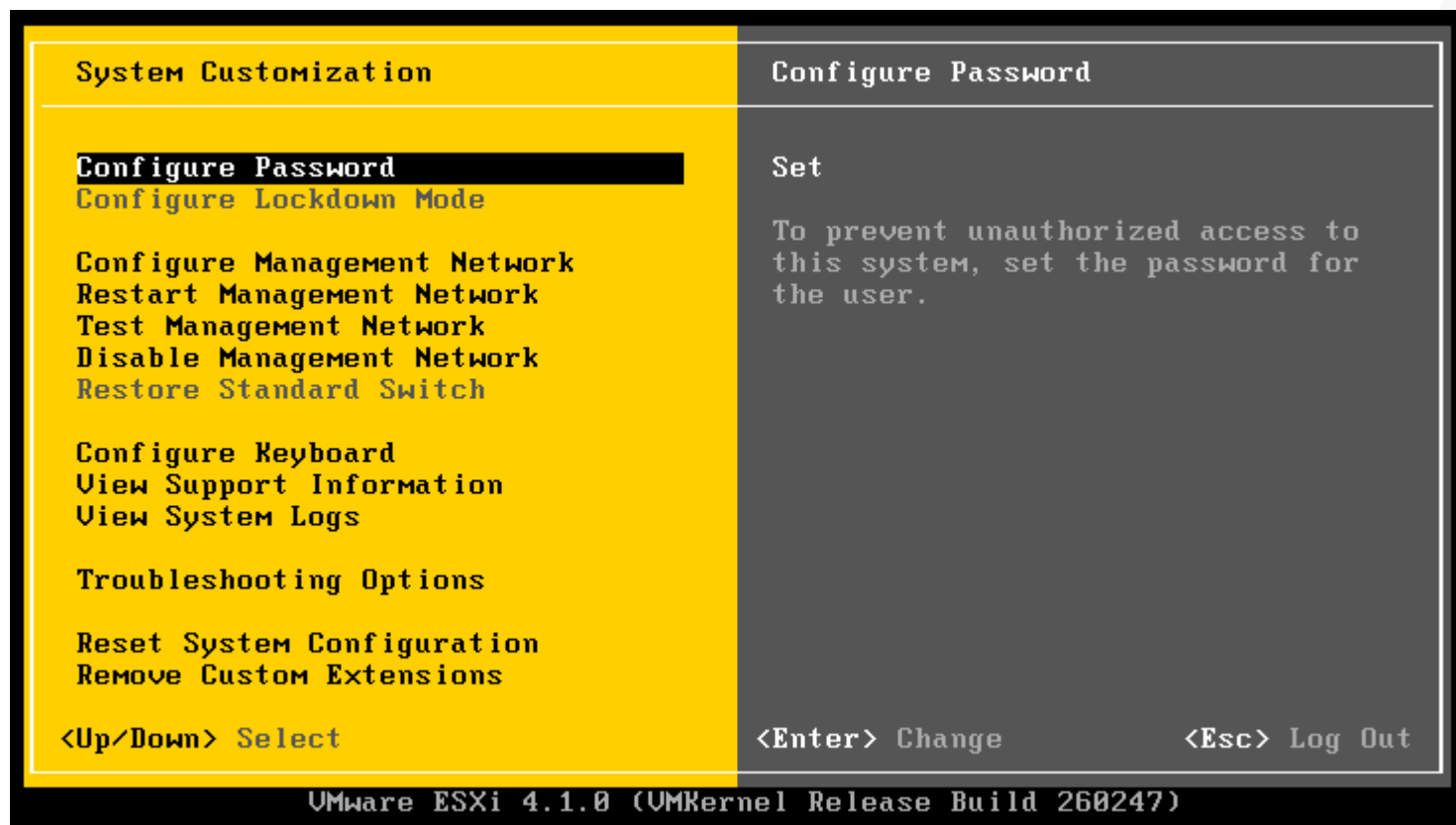
vmkibft loaded successfully.
```

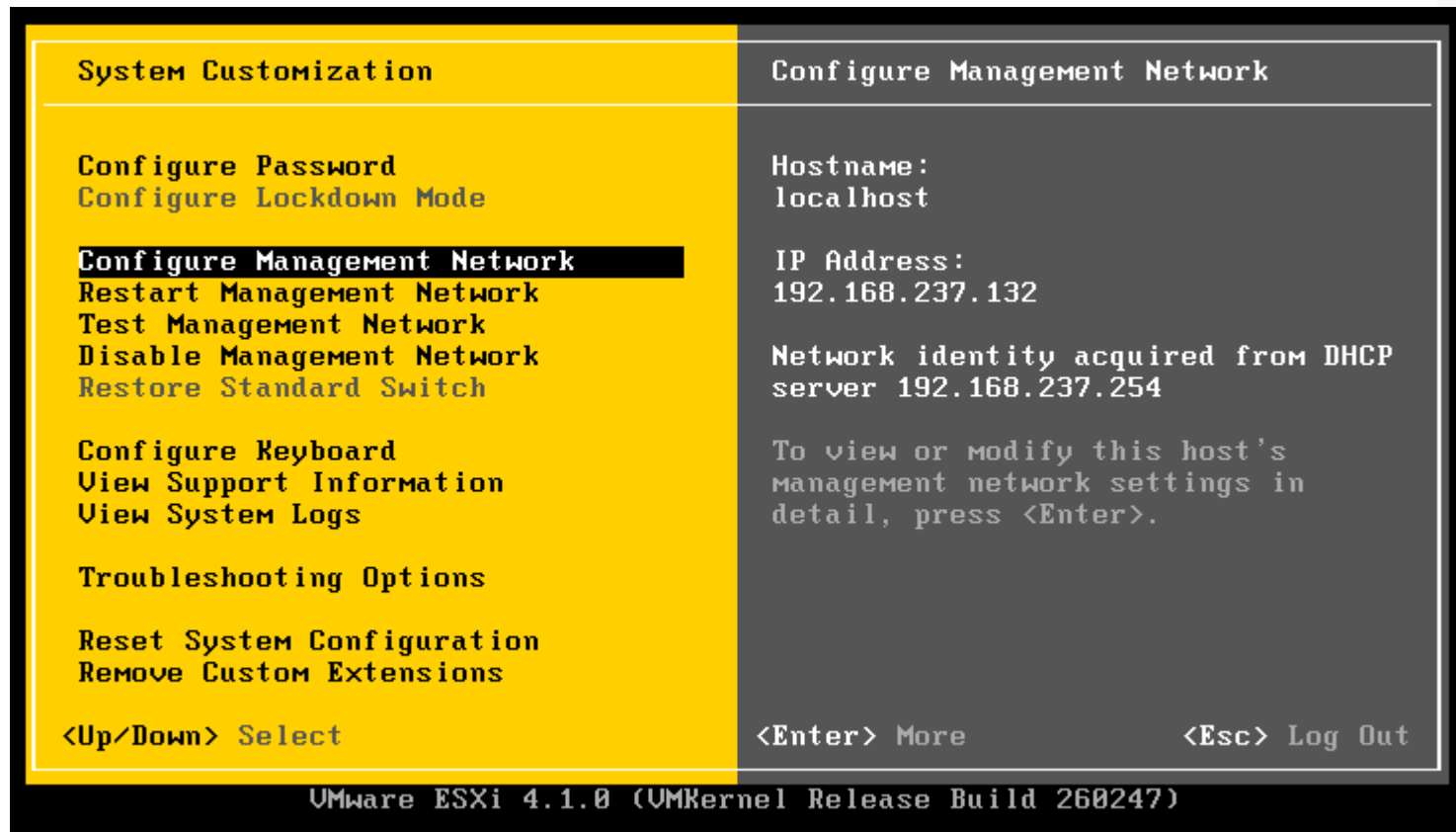


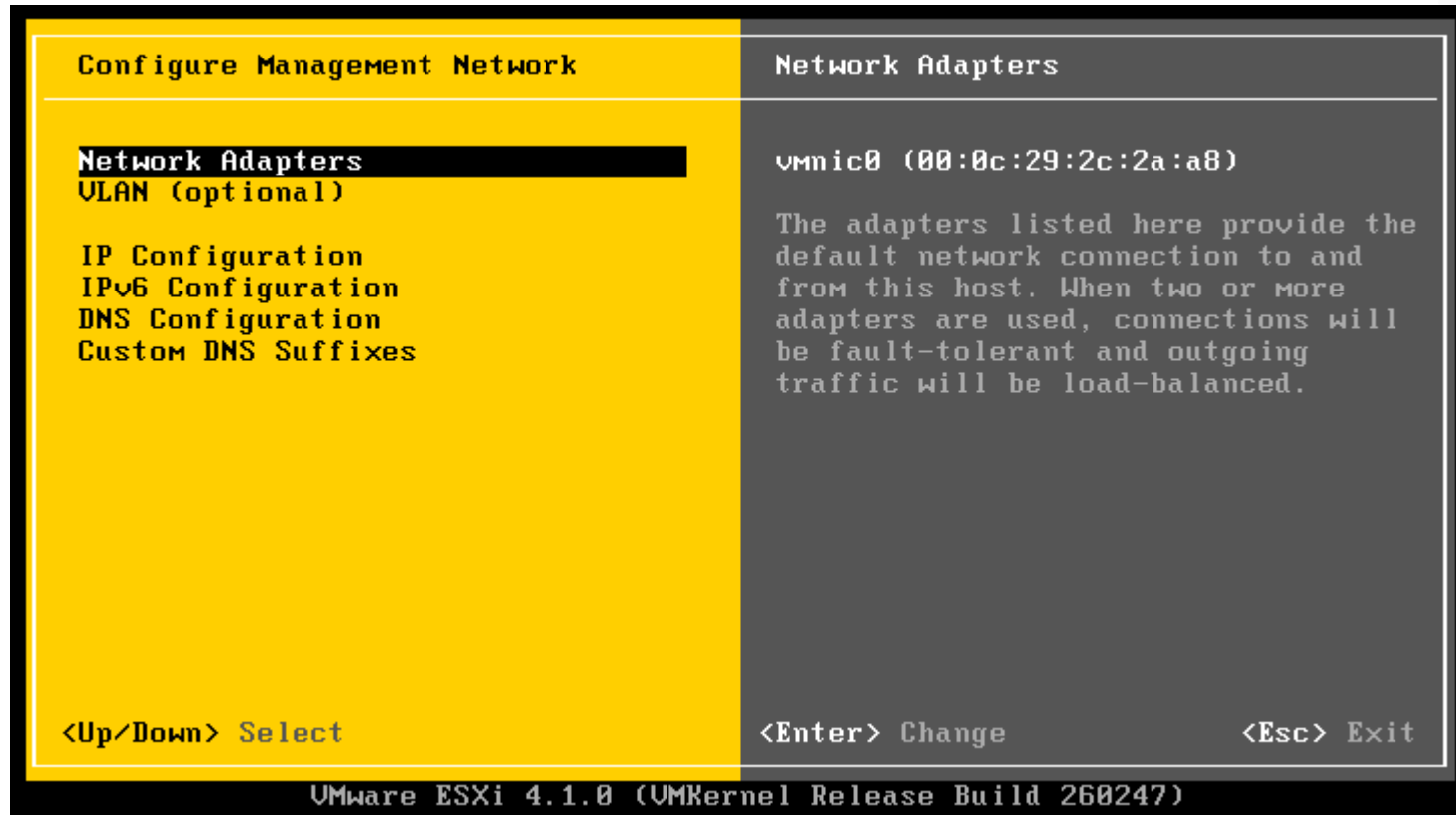


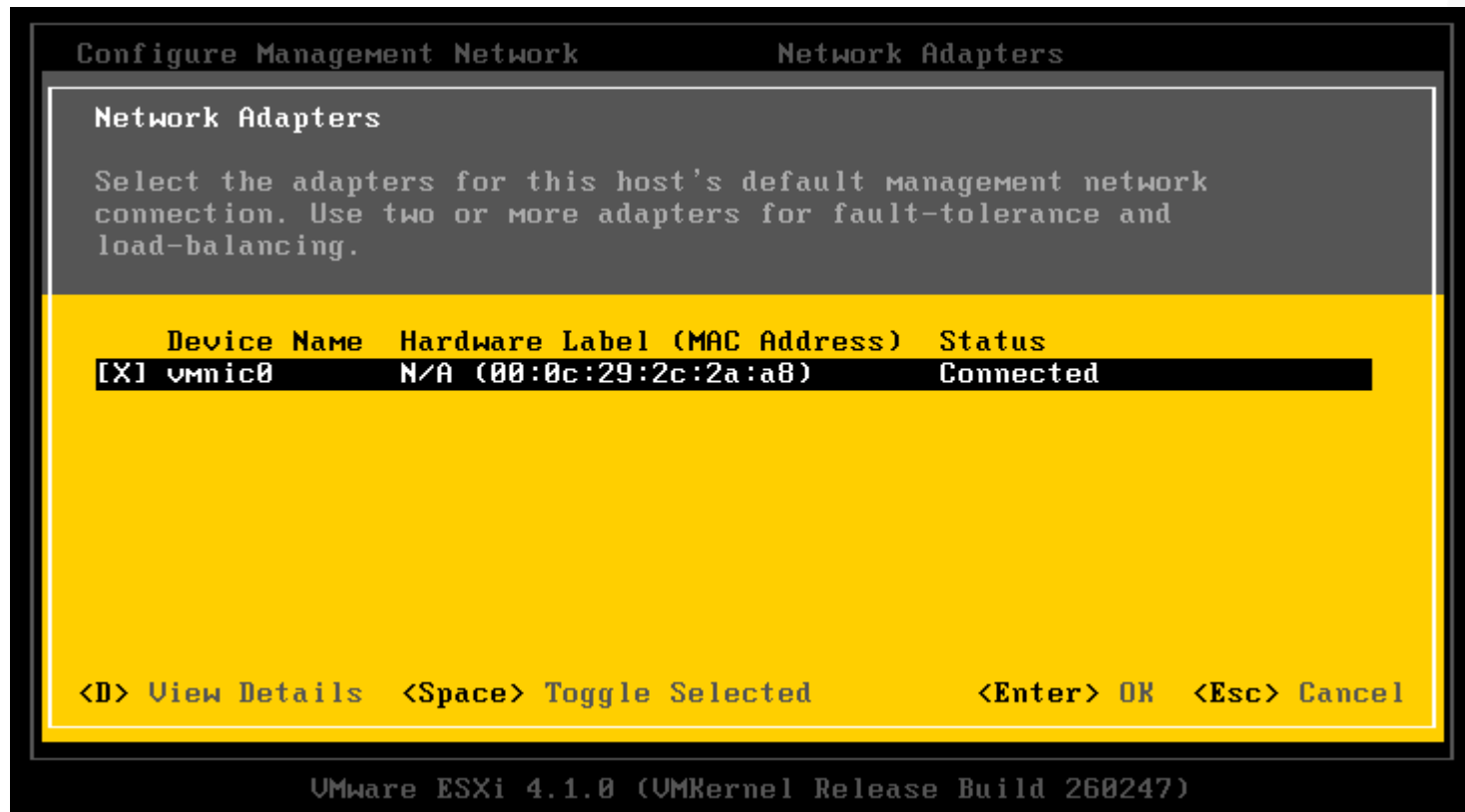


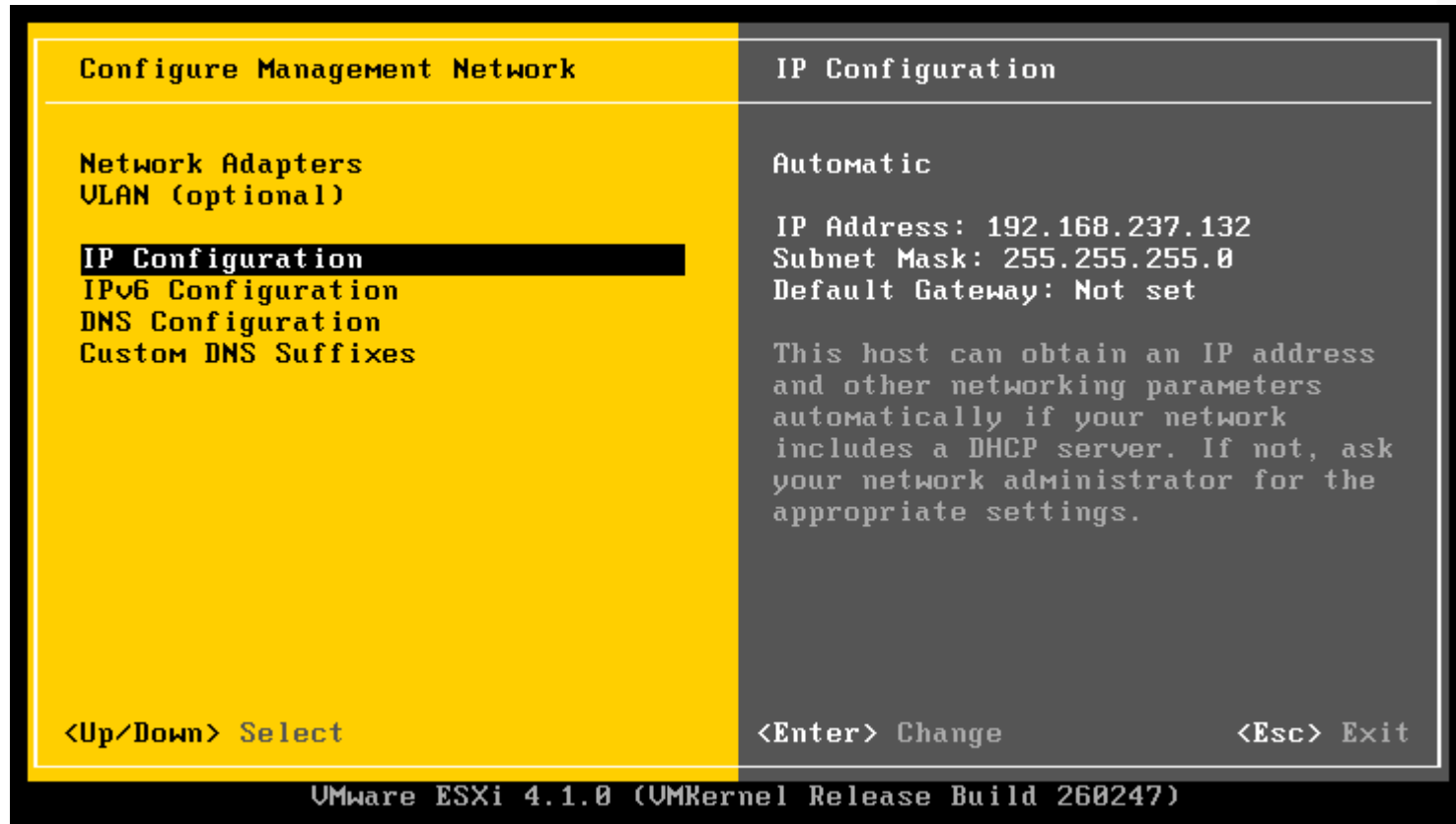


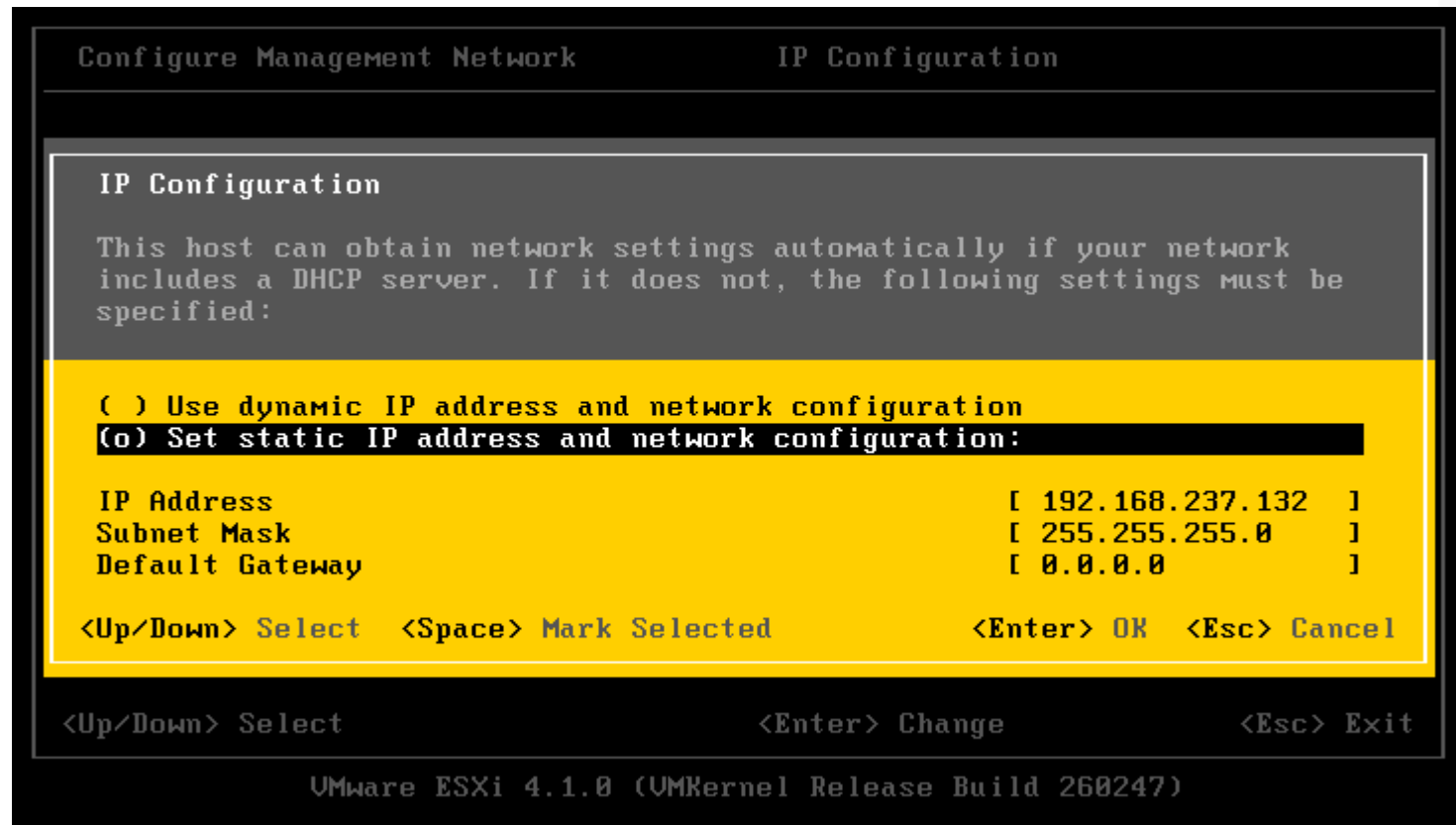


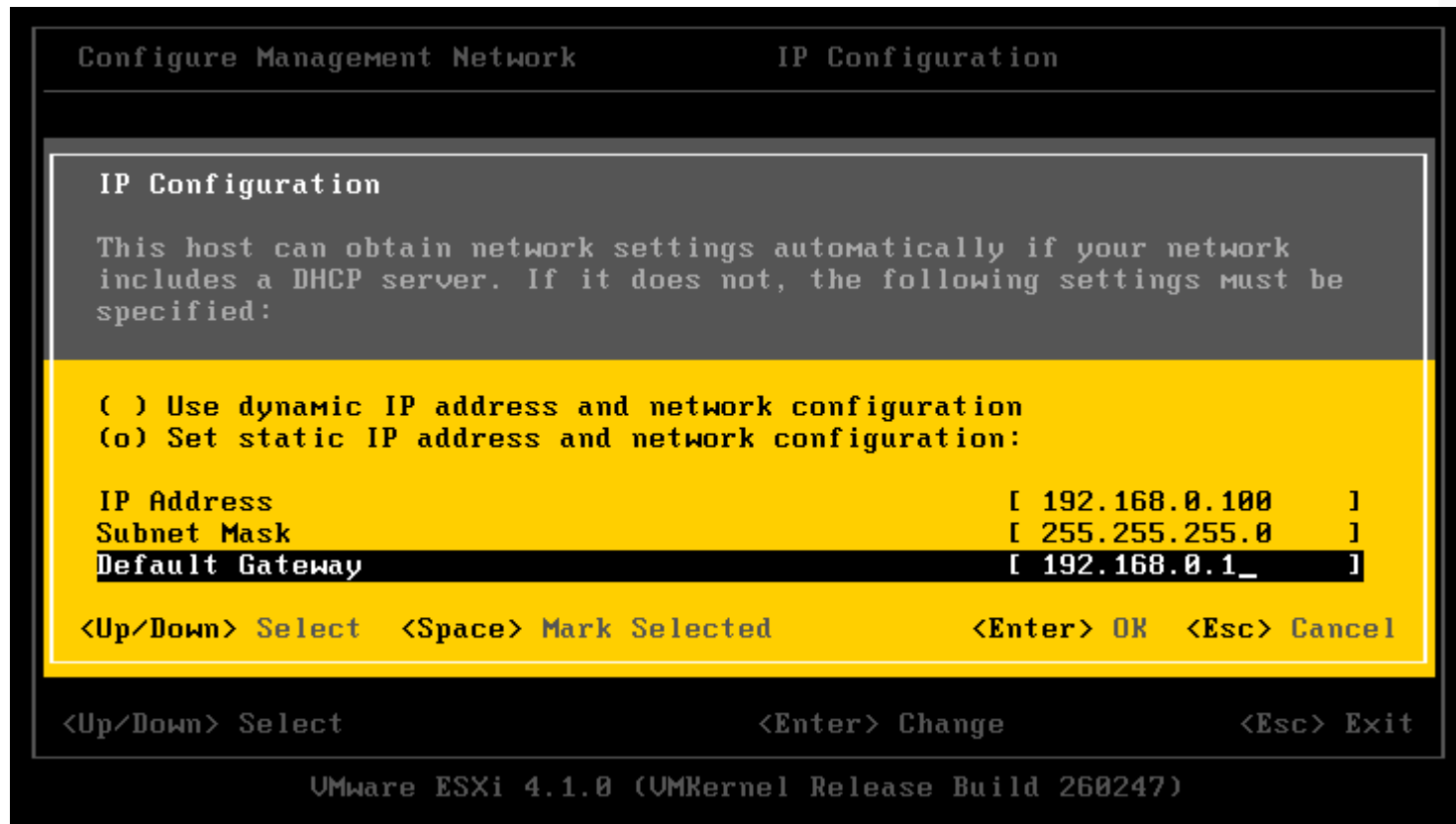


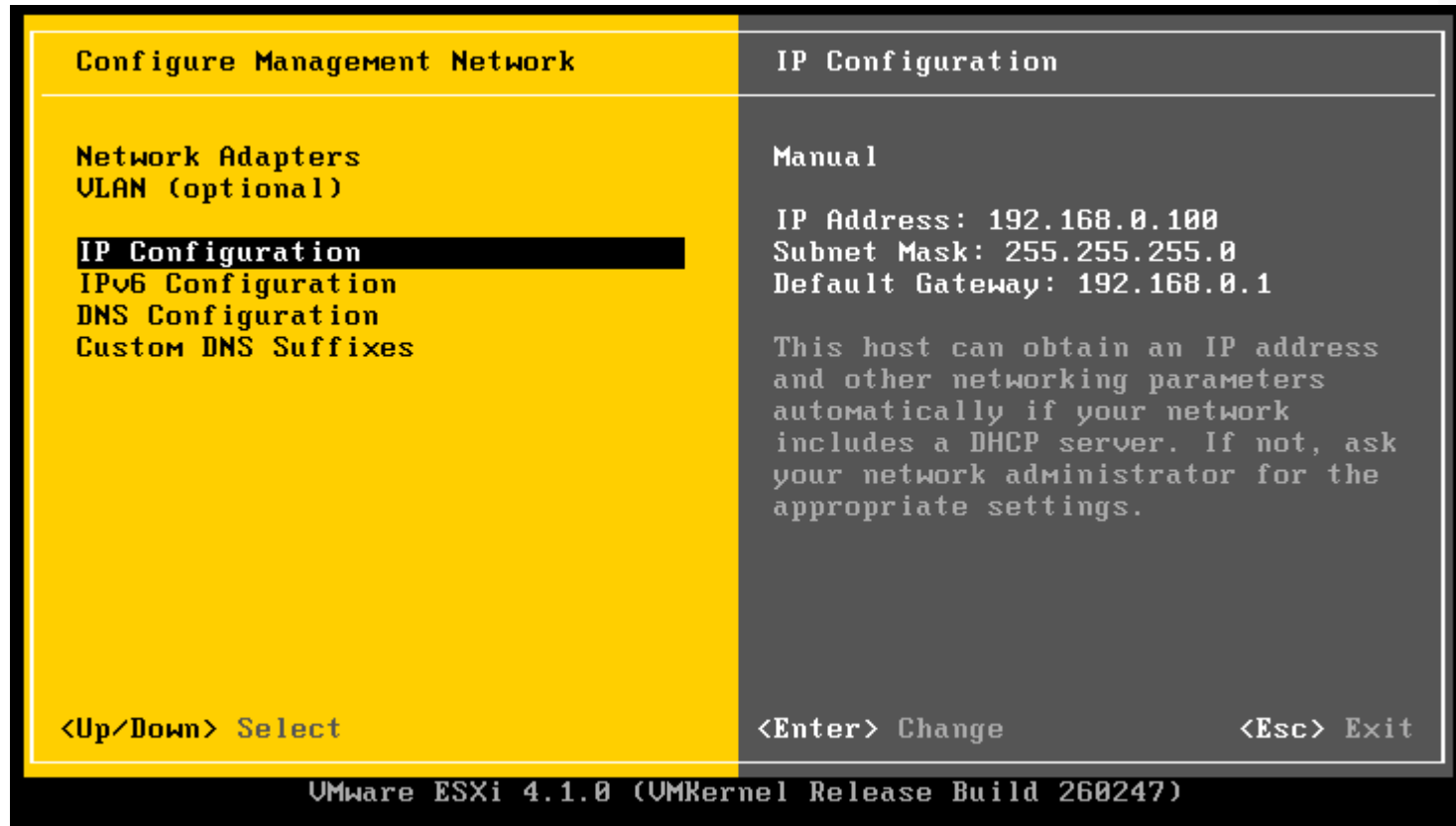


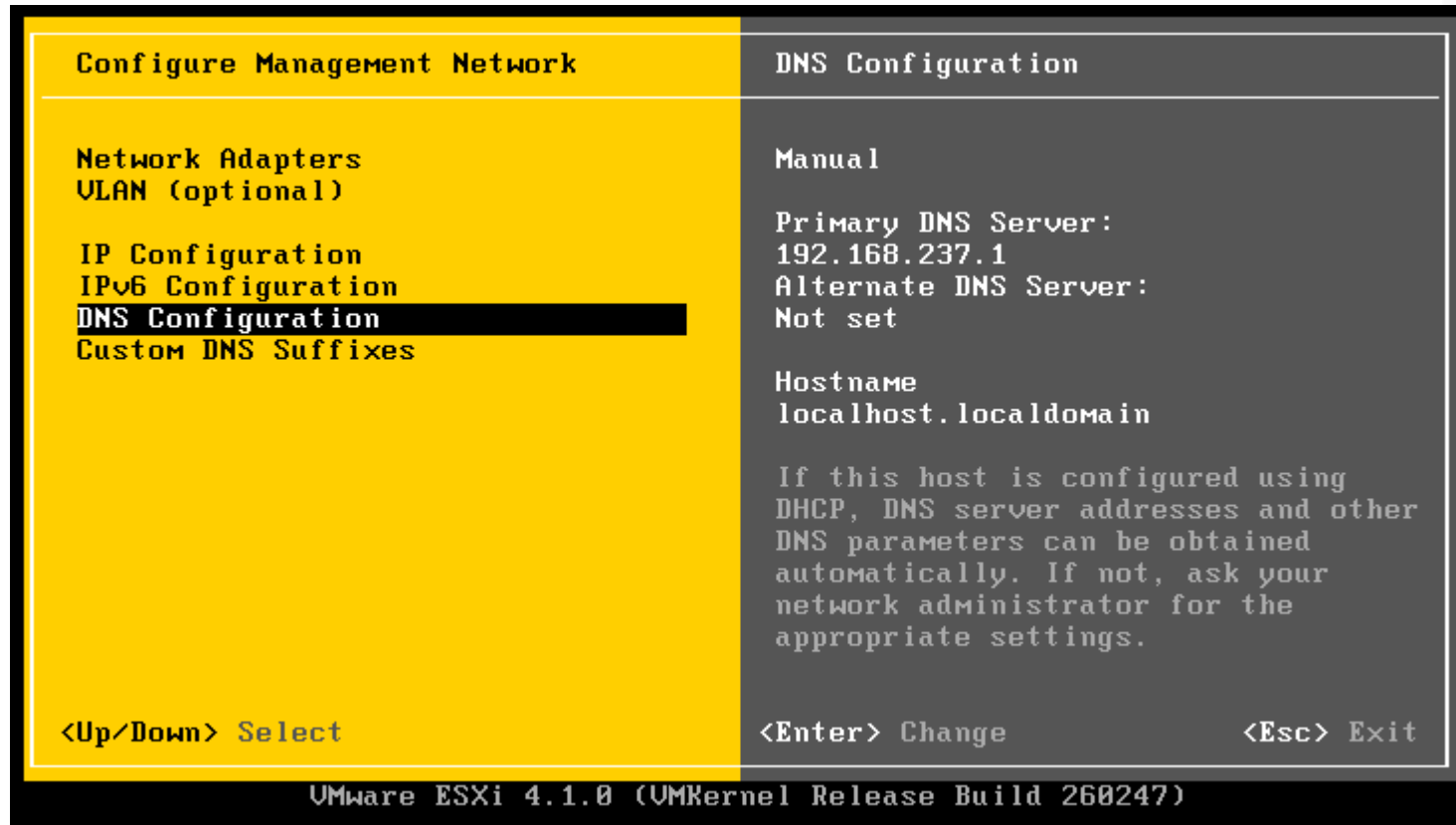












```
Configure Management Network          DNS Configuration

DNS Configuration

This host can only obtain DNS settings automatically if it also obtains
its IP configuration automatically.

( ) Obtain DNS server addresses and a hostname automatically
(o) Use the following DNS server addresses and hostname:

Primary DNS Server      [ 192.168.0.80          ]
Alternate DNS Server    [ 192.168.0.81          ]
Hostname                [ esxi-01.vtguru.com_    ]

<Up/Down> Select  <Space> Mark Selected          <Enter> OK  <Esc> Cancel

<Up/Down> Select          <Enter> Change          <Esc> Exit

VMware ESXi 4.1.0 (UMKernel Release Build 260247)
```

```

Configure Management Network
-----
Network Adapters
ULAN (optional)

IP Configuration
IPv6 Configuration
DNS Configuration
Custom DNS Suffixes

DNS Configuration
-----
Manual

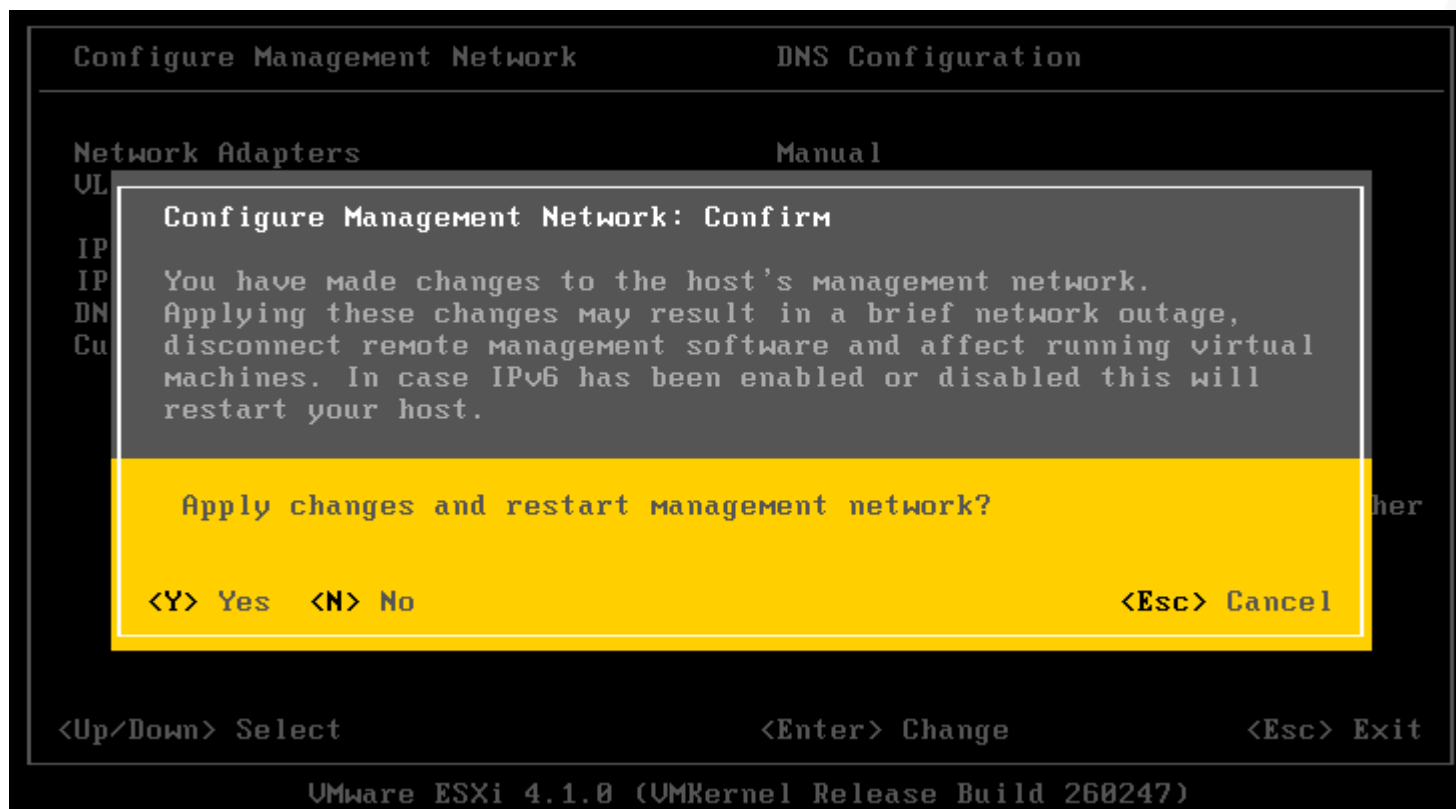
Primary DNS Server:
192.168.0.80
Alternate DNS Server:
192.168.0.81

Hostname
esxi-01.vtguru.com

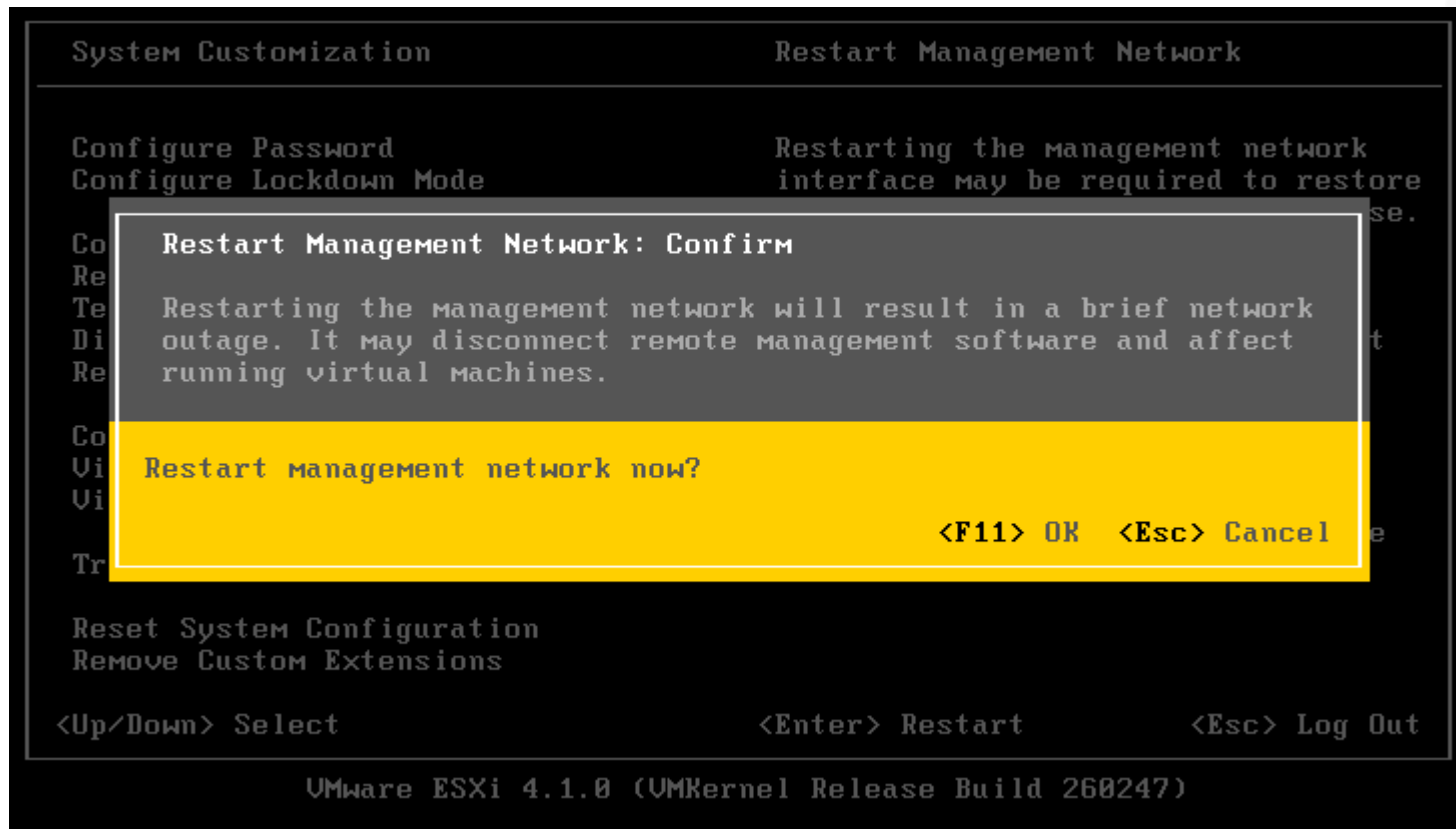
If this host is configured using
DHCP, DNS server addresses and other
DNS parameters can be obtained
automatically. If not, ask your
network administrator for the
appropriate settings.

<Up/Down> Select
<Enter> Change
<Esc> Exit

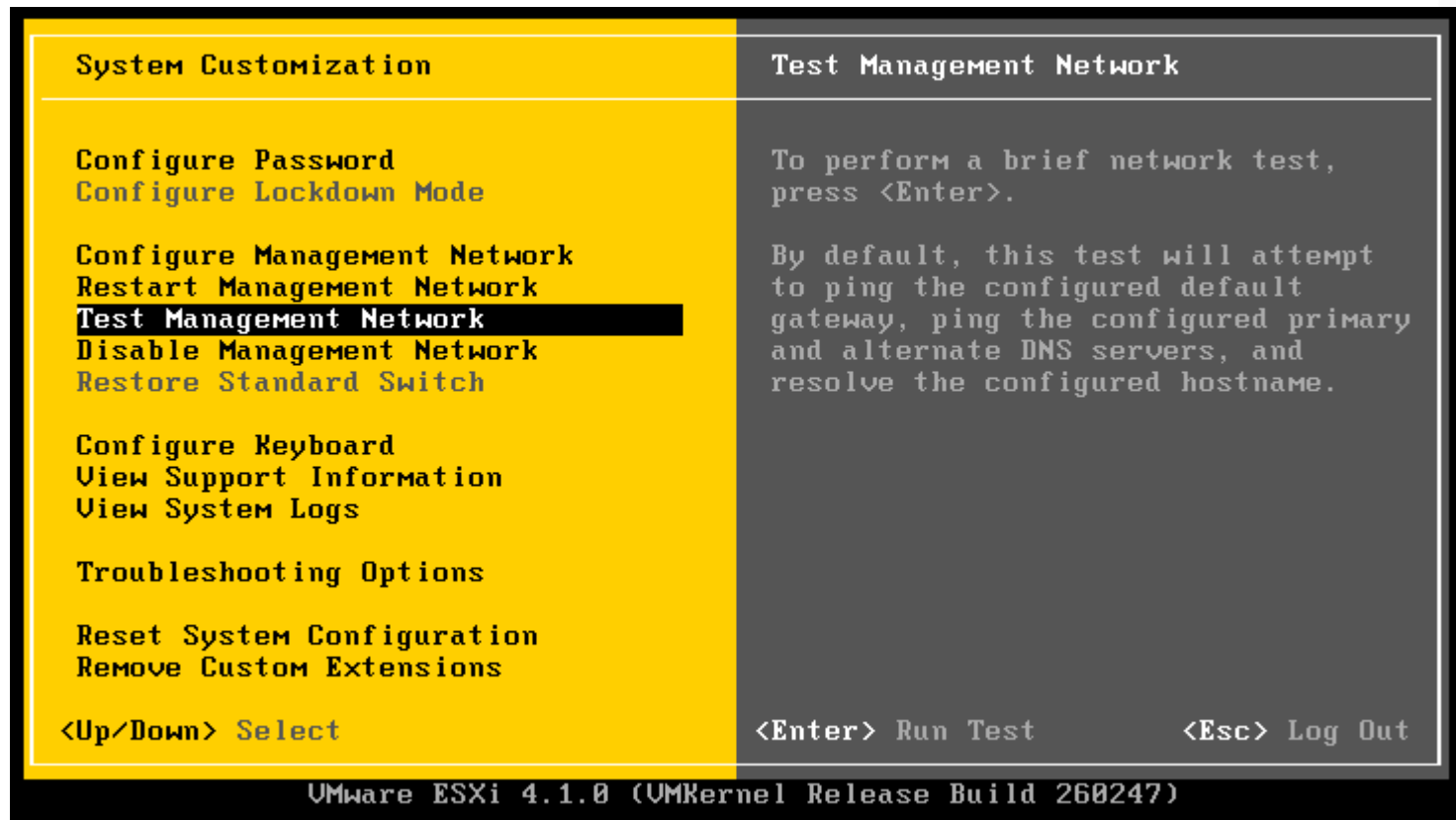
VMware ESXi 4.1.0 (UMKernel Release Build 260247)
    
```



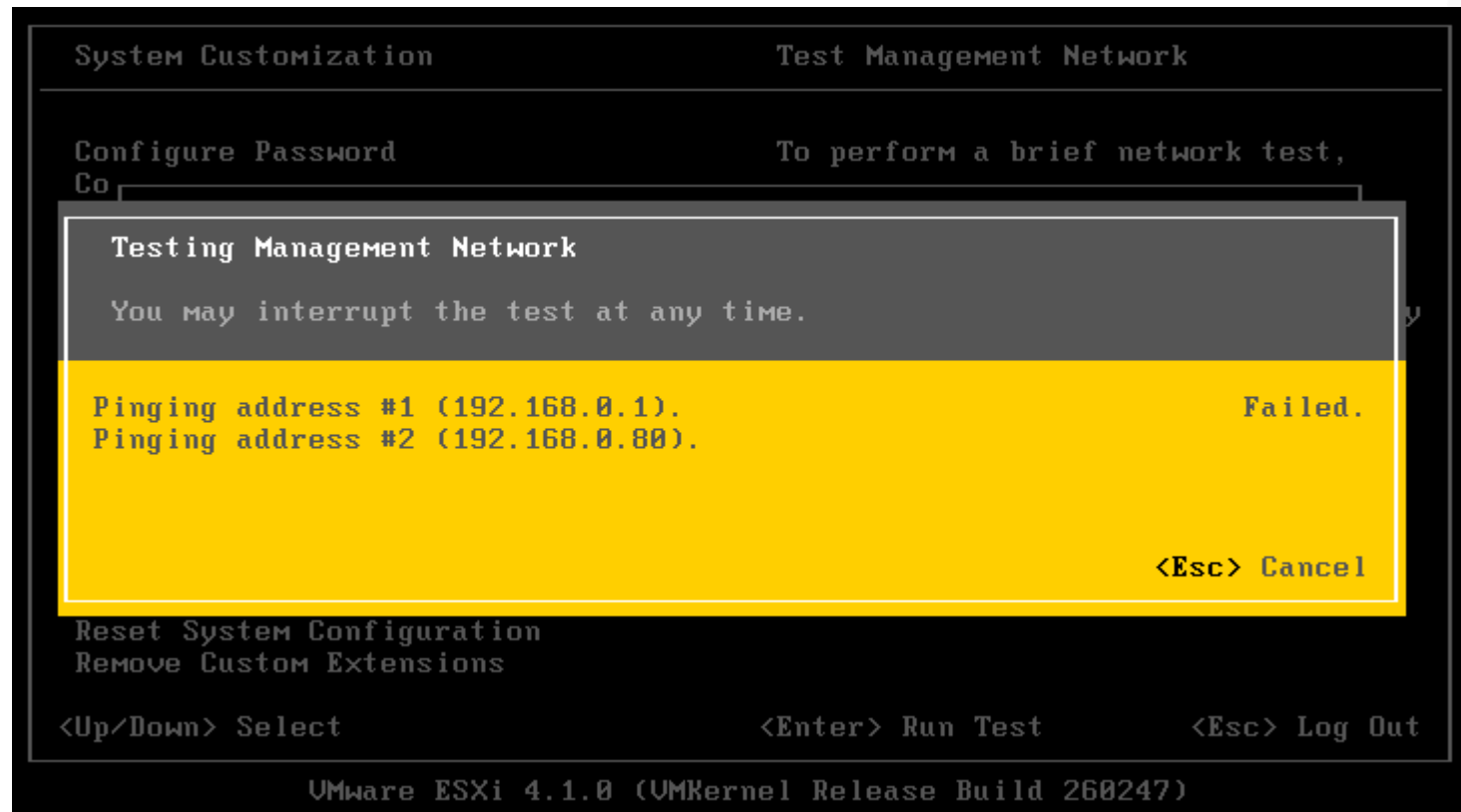


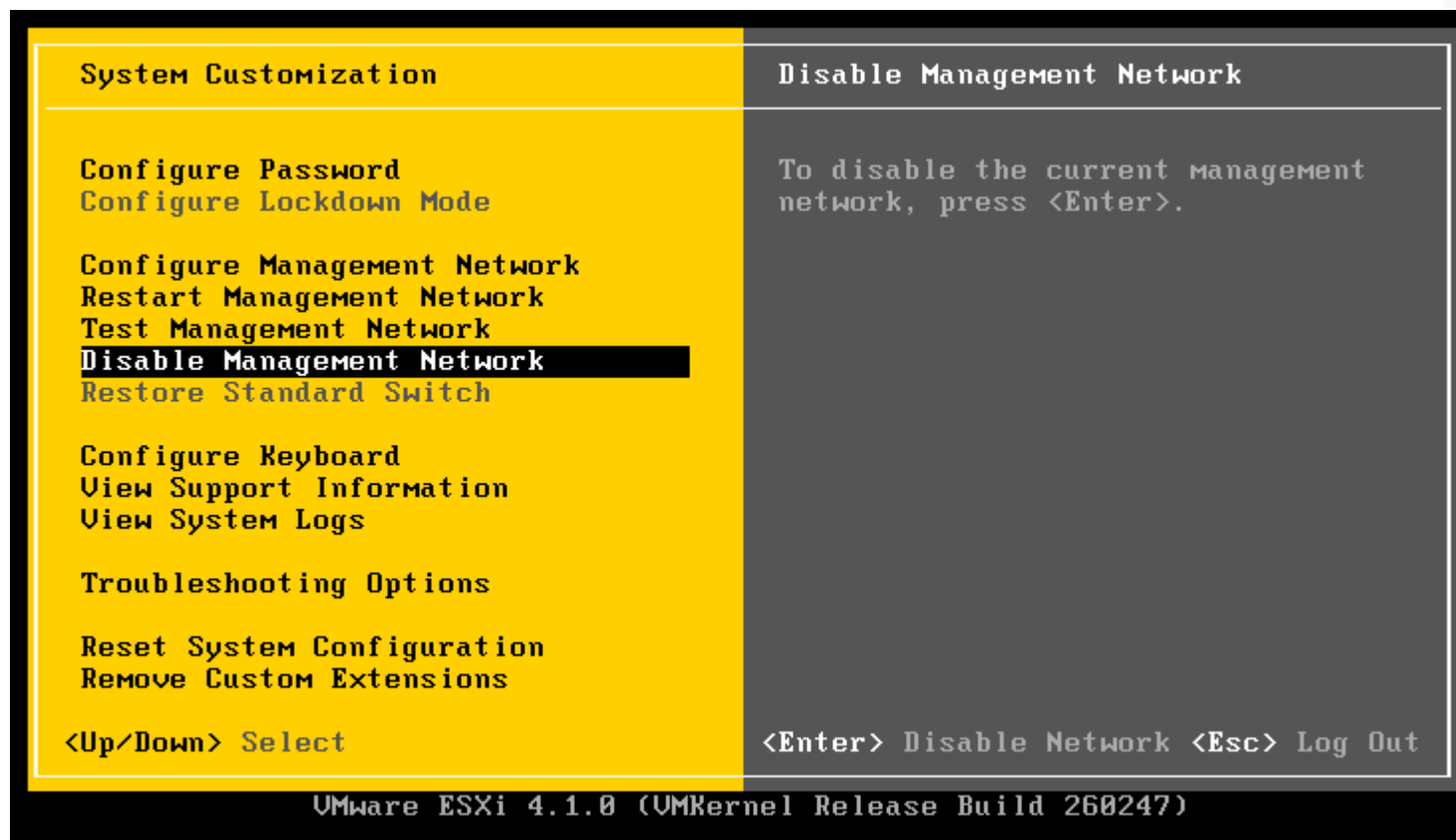


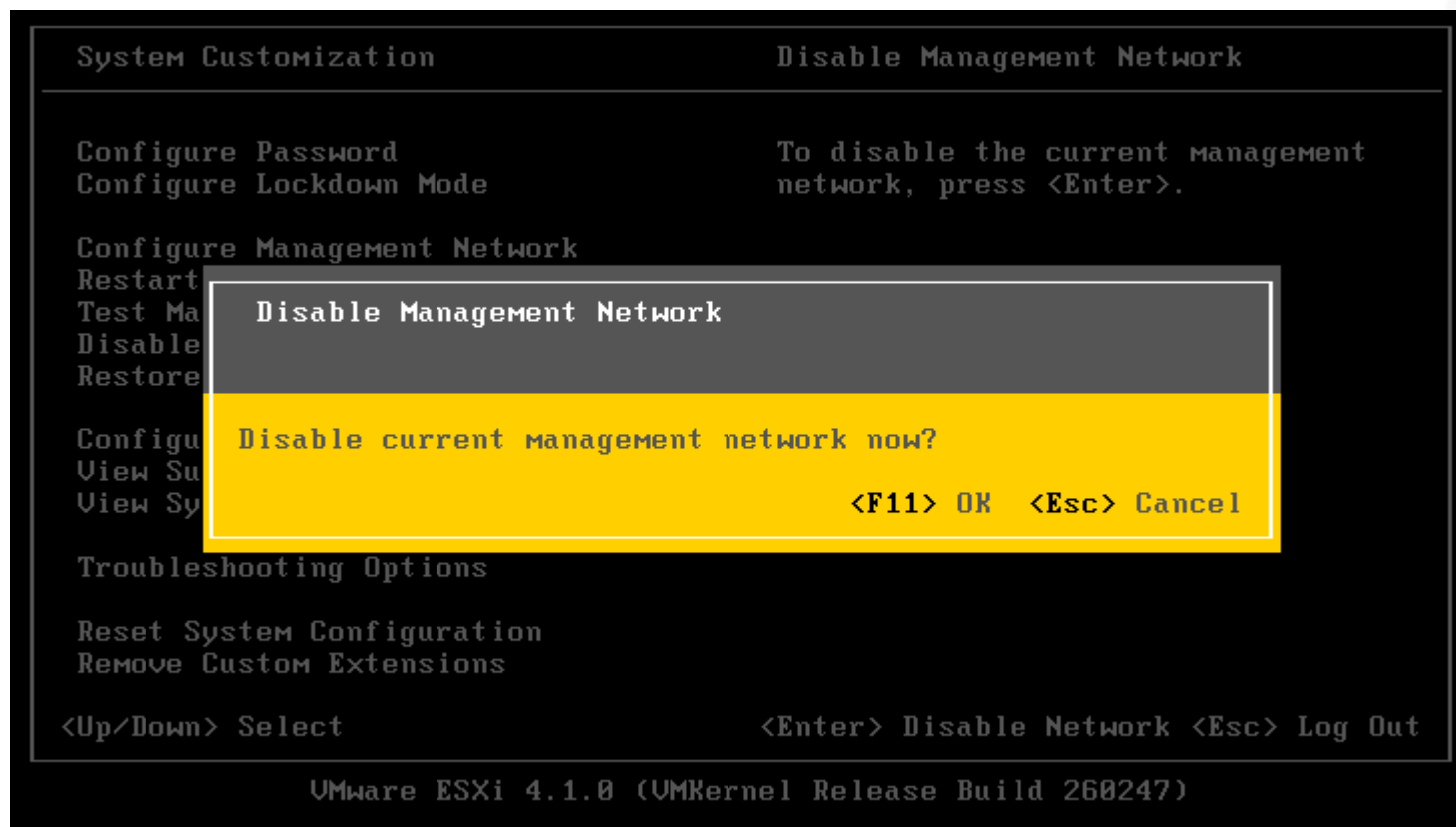


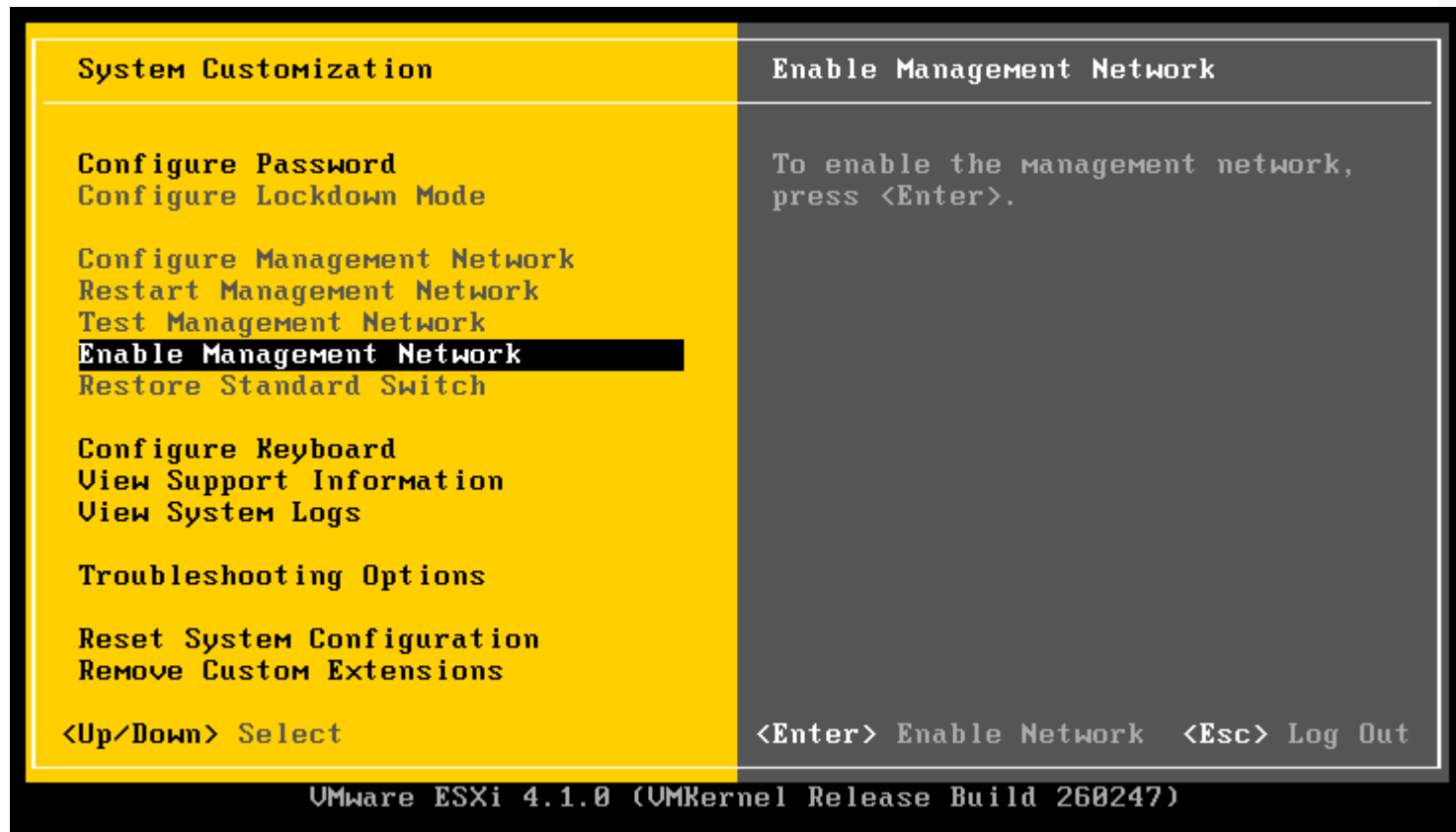


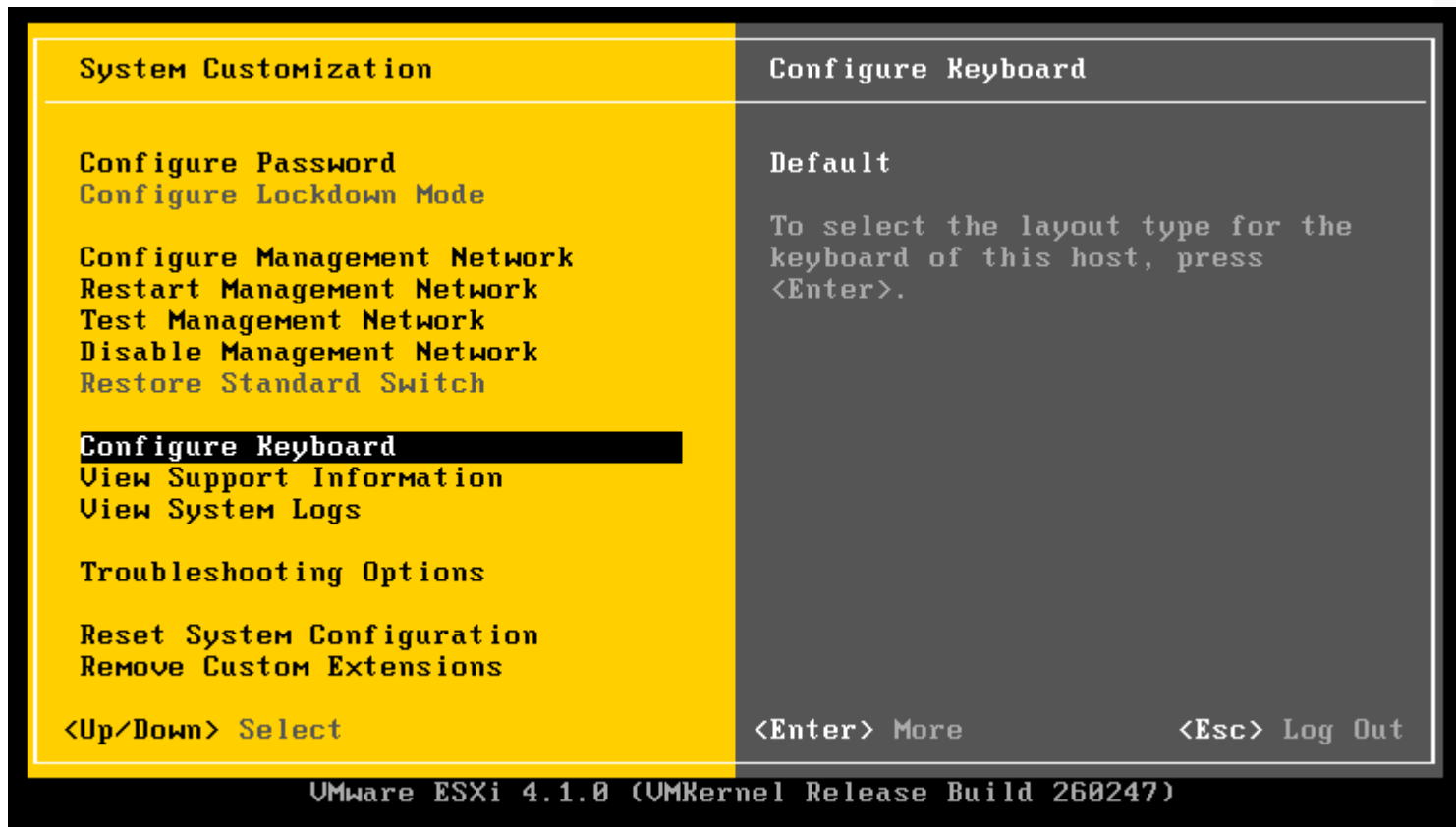














```

System Customization
-----
Configure Password
Configure Lockdown Mode

Configure Management Network
Restart Management Network
Test Management Network
Disable Management Network
Restore Standard Switch

Configure Keyboard
View Support Information
View System Logs

Troubleshooting Options

Reset System Configuration
Remove Custom Extensions

<Up/Down> Select

View Support Information
-----
<Page Up>      1/2      <Page Down>
Serial Number:
UMware-56 4d b2 f8 0a 59 2c ac-98 49
fa 46 00 2c 2a a8

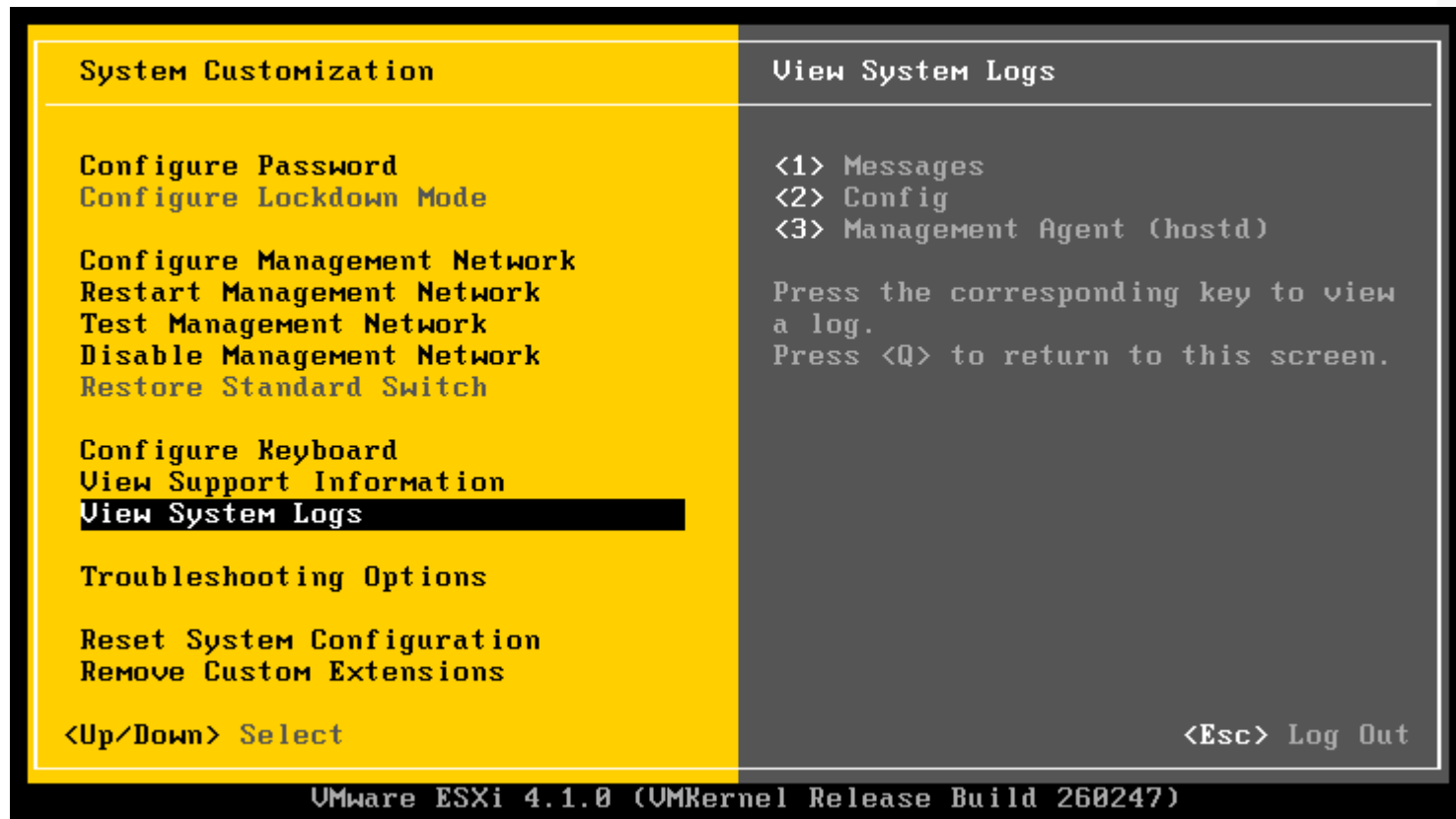
License Serial Number:
Evaluation

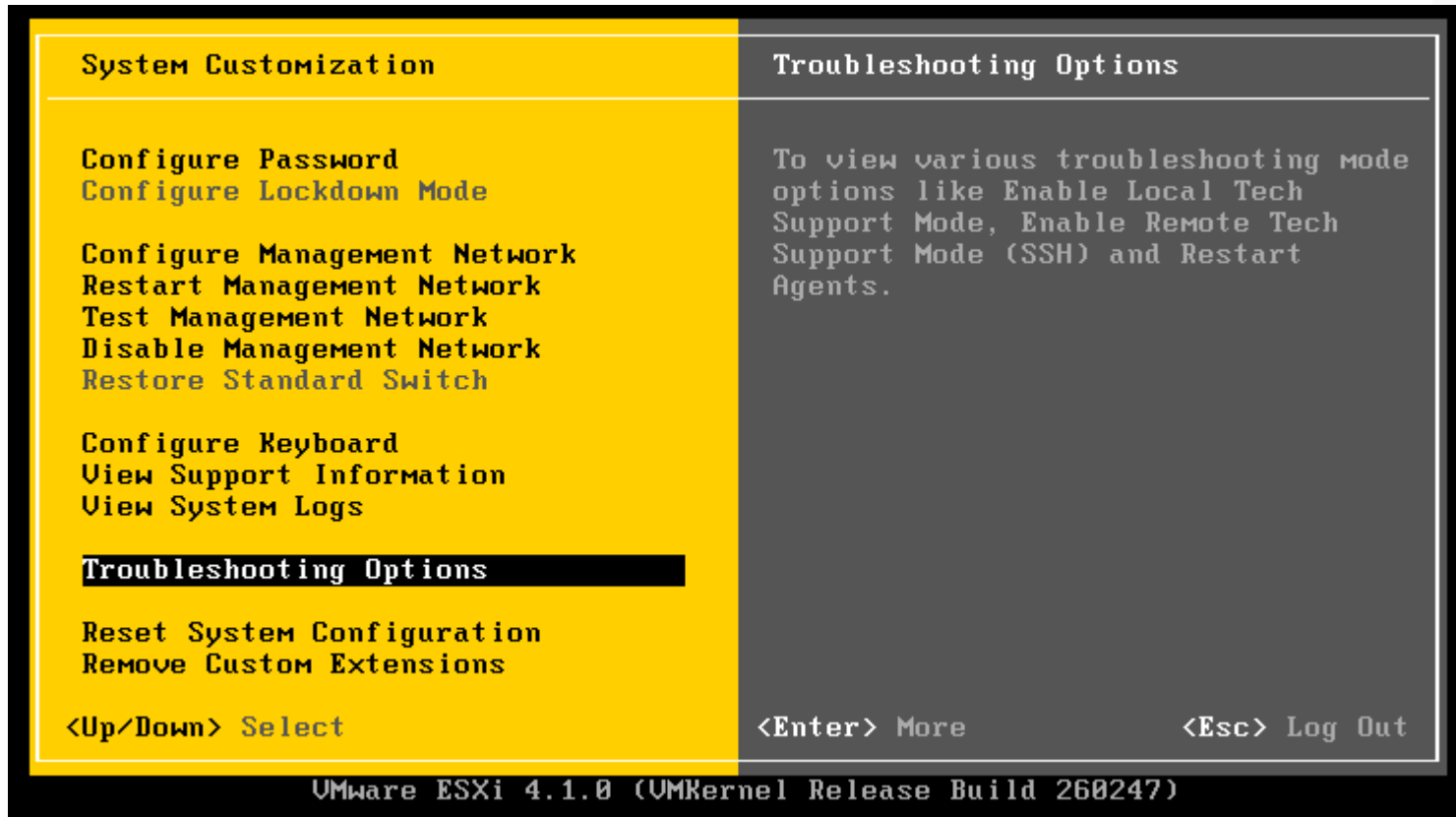
SSL Thumbprint (SHA1):
01:92:B6:CB:59:C2:7F:DF:9E:B4:BF:B5:
F4:A0:EF:59:D3:37:DF:7D

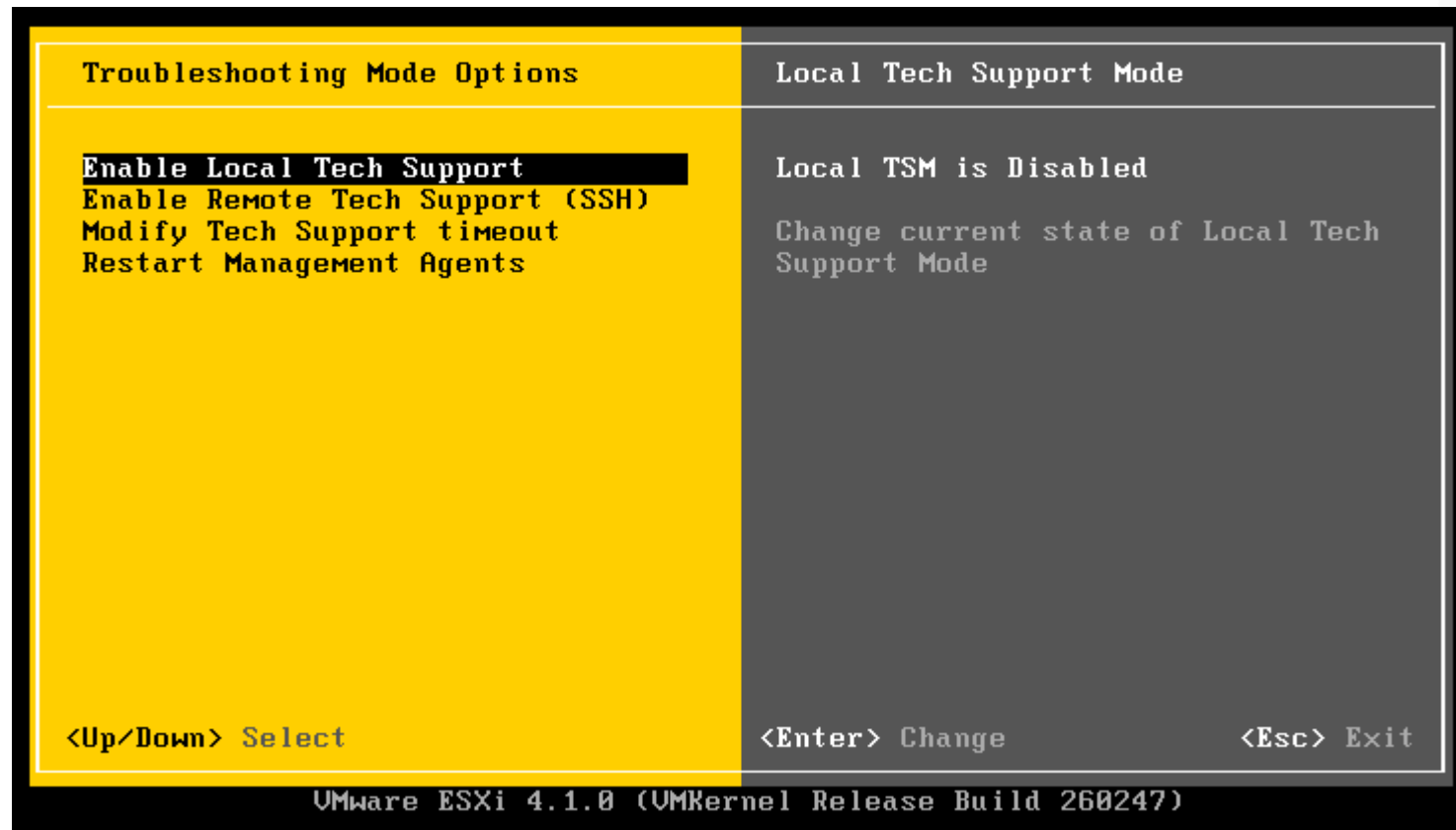
UMware Global Support Services:
http://www.vmware.com/support

<Esc> Log Out

VMware ESXi 4.1.0 (VMkernel Release Build 260247)
    
```







```

Troubleshooting Mode Options
-----
Enable Local Tech Support
Enable Remote Tech Support (SSH)
Modify Tech Support timeout
Restart Management Agents

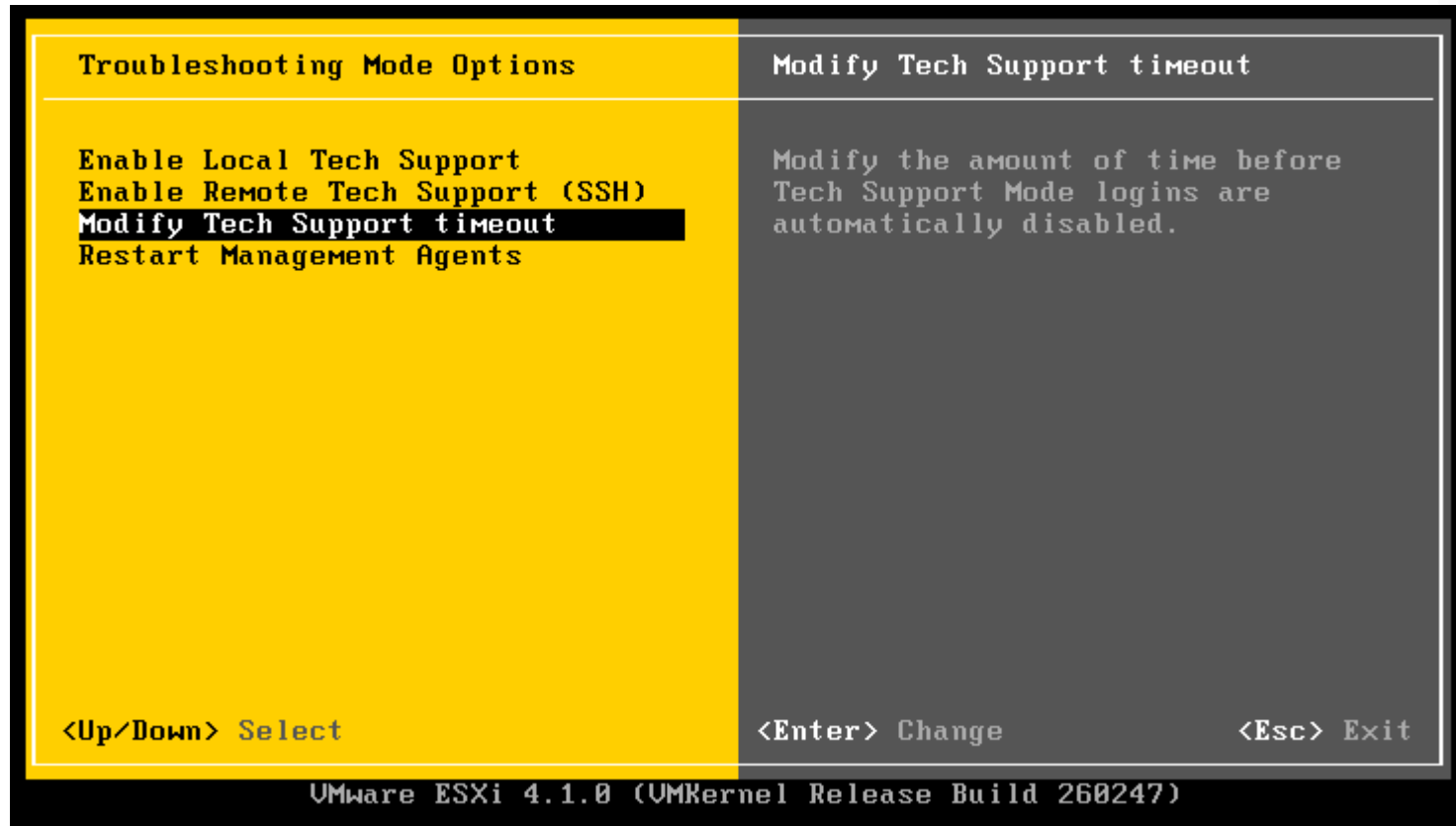
Remote Tech Support Mode (SSH)
-----
Remote TSM (SSH) is Disabled

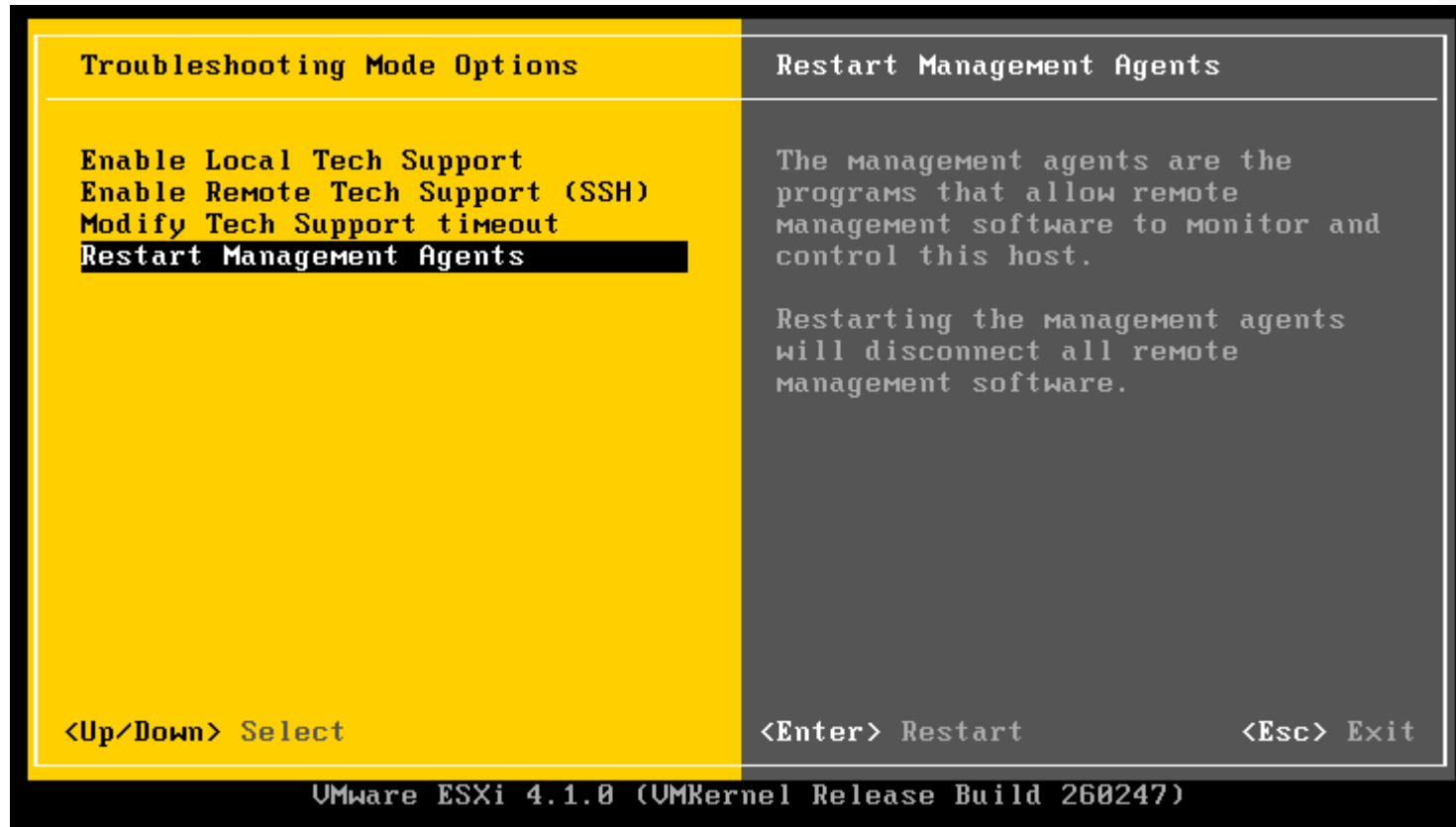
Change current state of Remote Tech
Support Mode (SSH)

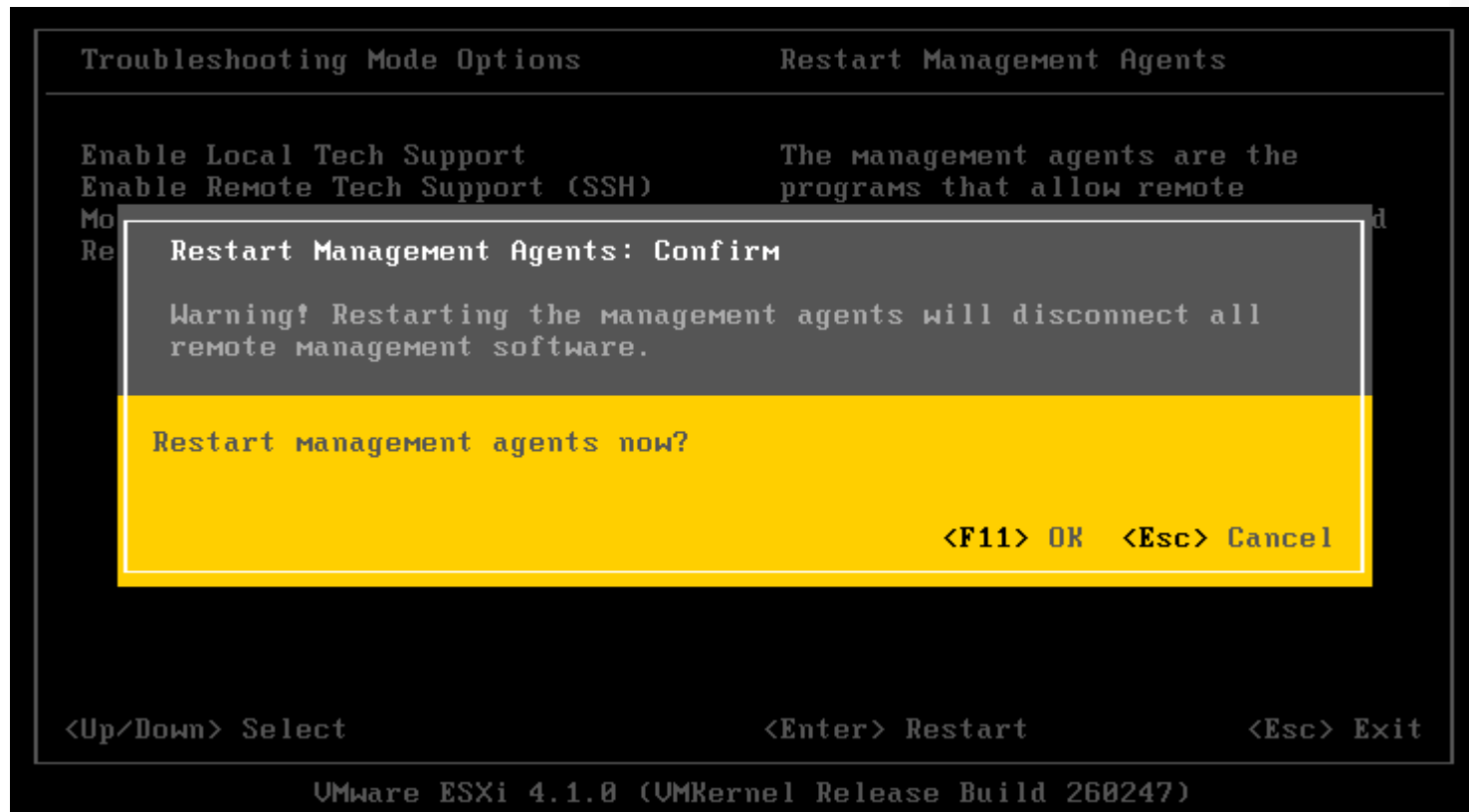
<Up/Down> Select
<Enter> Change
<Esc> Exit

VMware ESXi 4.1.0 (VMKernel Release Build 260247)

```







```
Troubleshooting Mode Options                                Restart Management Agents
-----
Enable Local Tech Support                                  The management agents are the
Enable Remote Tech Support (SSH)                          programs that allow remote
Mo
Re

Restart Management Agents: Confirm

Warning! Restarting the management agents will disconnect all
remote management software.

Stopping management agents.

<Up/Down> Select                                <Enter> Restart                                <Esc> Exit

VMware ESXi 4.1.0 (VMKernel Release Build 260247)
```

```
Troubleshooting Mode Options                                Restart Management Agents
-----
Enable Local Tech Support                                  The management agents are the
Enable Remote Tech Support (SSH)                          programs that allow remote
Mo
Re

Restart Management Agents: Confirm

Warning! Restarting the management agents will disconnect all
remote management software.

Stopping management agents. Done.
Starting management agents.

<Up/Down> Select                                <Enter> Restart                                <Esc> Exit

VMware ESXi 4.1.0 (VMKernel Release Build 260247)
```

```

Troubleshooting Mode Options                                Restart Management Agents
-----
Enable Local Tech Support                                  The management agents are the
Enable Remote Tech Support (SSH)                          programs that allow remote
Mo
Re

Restart Management Agents: Confirm

Warning! Restarting the management agents will disconnect all
remote management software.

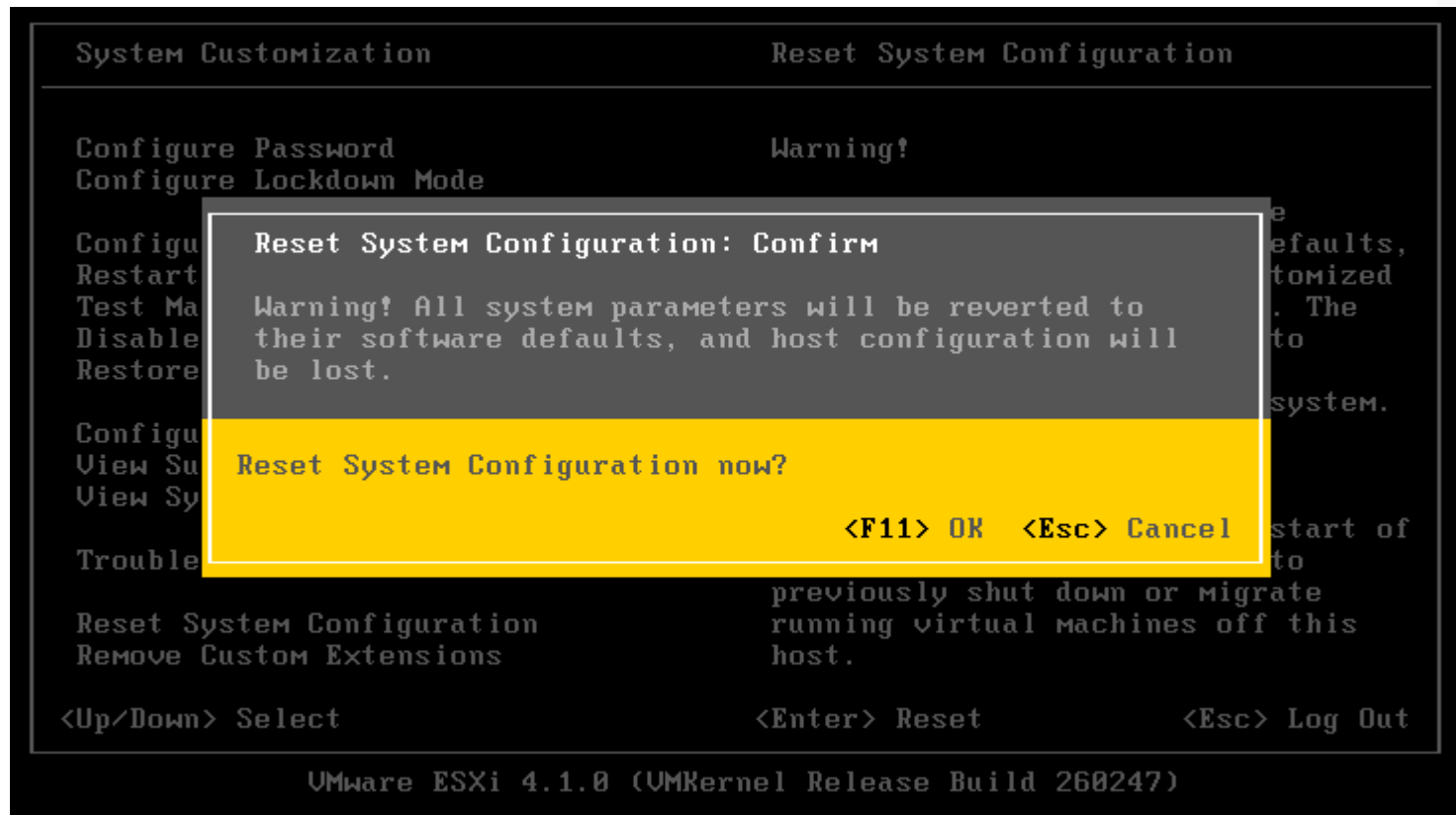
Stopping management agents. Done.
Starting management agents.

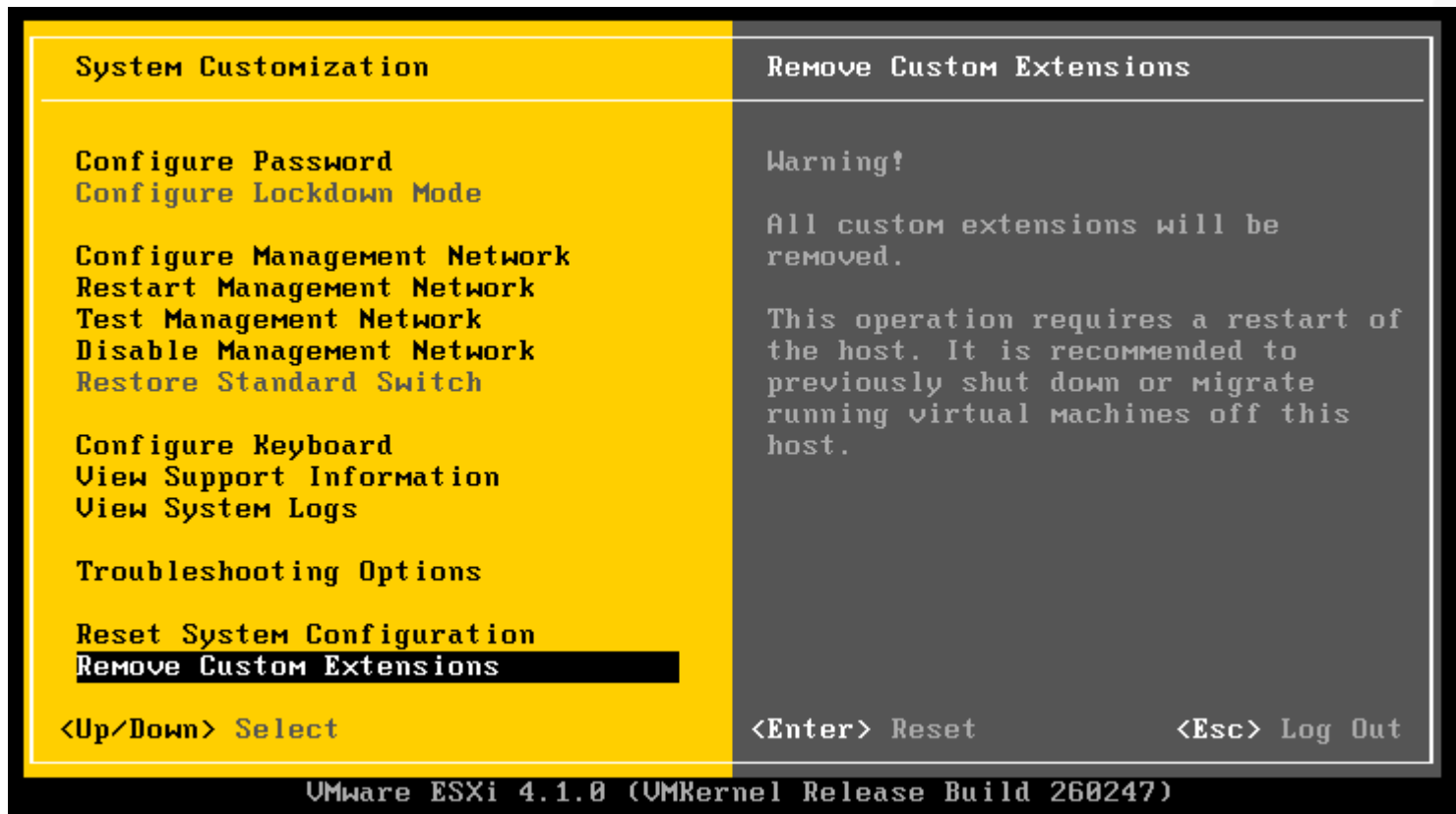
<Up/Down> Select                                <Enter> Restart                                <Esc> Exit

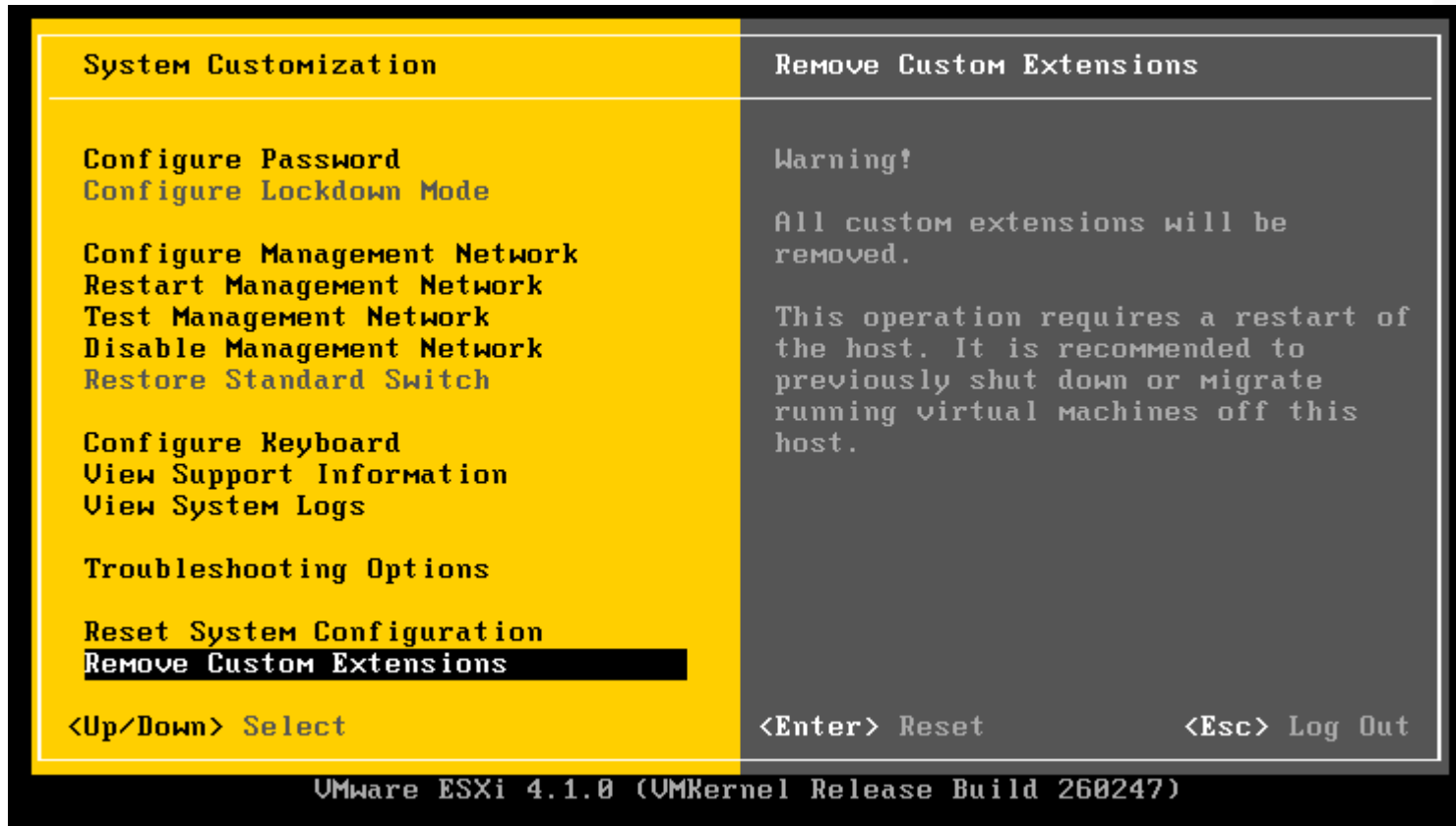
VMware ESXi 4.1.0 (VMKernel Release Build 260247)
    
```

System Customization	Reset System Configuration
Configure Password Configure Lockdown Mode  Configure Management Network Restart Management Network Test Management Network Disable Management Network Restore Standard Switch  Configure Keyboard View Support Information View System Logs  Troubleshooting Options  <b>Reset System Configuration</b> Remove Custom Extensions  <Up/Down> Select	Warning!  All system parameters will be reverted to their software defaults, including any parameters customized by the hardware manufacturer. The root password will be reset to nothing, which may allow unauthorized access to your system. All virtual machines will be unregistered.  This operation requires a restart of the host. It is recommended to previously shut down or migrate running virtual machines off this host.  <Enter> Reset                      <Esc> Log Out

VMware ESXi 4.1.0 (UMKernel Release Build 260247)







```
VMware ESXi 4.1.0 (VMKernel Release Build 260247)

VMware, Inc. VMware Virtual Platform

2 x Intel(R) Core(TM)2 Quad CPU Q6600 @ 2.40GHz
2 GB Memory

Download tools to manage this host from:
http://esxi-01/
http://192.168.0.100/ (STATIC)

<F2> Customize System                                <F12> Shut Down/Restart
```

